

# stone

D U T C H   Q U A L I T Y





*[WWW.DUTCHQUALITYSTONE.COM](http://WWW.DUTCHQUALITYSTONE.COM)*



*Amish craftsmanship is revered throughout the world, and our production facilities are located in the heart of one of the biggest Amish communities in America. This goes a long way toward explaining why Dutch Quality Stone™ products have become an industry leader in quality and consistency.*

*We have combined fine craftsmanship with high production techniques. The result is a stunning collection of fine veneer stones readily available for on-time shipment to our dealer network.*

*In our corner of the world, people believe in doing things right. Take a close look at Dutch Quality Stone™ --- it shows.*

<b>Design Inspiration</b>	
Outdoor Spaces	6 - 9
Interior Design	10 - 17
Residential Applications	18 - 25
Commercial Applications	26 - 29
Landscaping	30 - 32
<b>Products</b>	
Weather Ledge	34 - 35
Dry Stack	36 - 37
Ledgestone	38 - 39
Stack Ledge	40 - 41
Limestone	42 - 43
Cobbled Limestone	44 - 45
Fieldstone	46 - 47
River Rock	48 - 49
Castle Stone	50 - 51
<b>Accessories</b>	<b>52 - 55</b>
<b>Profile Index</b>	<b>56 - 57</b>
<b>Installation Techniques</b>	<b>58</b>
<b>Warranty</b>	<b>59</b>



# Design Inspiration

Here at Dutch Quality Stone™, we are in the business of taking ordinary items such as stone and mortar, and creating wondrous works of art. Our catalog has been created to help you envision the various applications that our stone can be used for.



Sagewood Fieldstone



Prestige Weather Ledge





Pennsylvania Ledgestone / Pennsylvania Fieldstone



Cypress Ledgestone / Cypress Fieldstone



Tan Weather Ledge

Design Inspiration

www.dutchqualitystone.com





# Outdoor Spaces

Wow your guests with impressions of excellence using Dutch Quality Stone™. Our product lines give you the capability to create exterior center pieces that will leave your guests speechless. See how Dutch Quality Stone™ can transform your home into a work of art.



Pennsylvania Fieldstone



Cypress Cobbled Limestone / Cypress Fieldstone



Kentucky Fieldstone



Pennsylvania Fieldstone



Sagewood Weather Ledge





Natural Blend Weather Ledge



Outdoor Spaces

www.dutchqualitystone.com

stone  
BUILDING PRODUCTS  
7

Sagewood Ledgestone / Sagewood Fieldstone



# Outdoor Spaces

Create a relaxing oasis that you will want to share with all of your friends by incorporating Dutch Quality Stone™ on an exterior fireplace, outdoor kitchen, retaining wall, or any other landscaping idea that you may have.



Columbus Blend Limestone



Kentucky Fieldstone





Great Lakes Limestone



Ohio Tan Limestone



Cypress Castle Stone



Cypress Cobbled Limestone / Cypress Fieldstone

Outdoor Spaces

www.dutchqualitystone.com



# Interior Design

Whether you are looking for ideas to redefine your interior or just want to capture the raw beauty of stone, Dutch Quality Stone™ has the profiles and colors to match your every need. Let our catalog INSPIRE you to create something magnificent.



Pennsylvania Weather Ledge



Pennsylvania Ledgestone





Sagewood LedgeStone



Pennsylvania LedgeStone / Pennsylvania FieldStone



# Interior Design

Whether you want to accent a wall or create a focal point in a room, Dutch Quality Stone™ can be utilized in an interior setting to take your home decor to new heights.



Pennsylvania Ledge Stone



Sagewood Ledge Stone





Sienna Stack Ledge



Pennsylvania Ledgestone











# Interior Design

We look at things a little differently than other stone manufacturers. Our approach is big company production with small business service. We take pride in the high quality and consistent product that we stand firmly behind. Attention to details, even the small ones, has been the key to our success.



Pennsylvania Ledgestone



Sagewood Ledgestone







# Residential Design

It all starts with our molding process. We manufacture our own stone molds, utilizing a technique that captures even the slightest details of the natural stone. With this process, we are able to recreate stone as it appears in nature. Add an array of color options, and you get just the look you desire from your stone facade.



Pennsylvania Weather Ledge



Kentucky Fieldstone





Pennsylvania Limestone



Prestige Weather Ledge



Natural Blend Weather Ledge / Tan Fieldstone



Sienna Castle Stone



# Residential Design

Our masters are selected from natural stone for their size, shape, and fit. Choosing from nature's finest is what gives Dutch Quality Stone™ its natural look. You want the best for your home, and we are here to make it for you.



Sienna Weather Ledge



Pennsylvania LedgeStone / Pennsylvania Fieldstone



Natural Blend LedgeStone



Autumn Blend Limestone





Tan Weather Ledge



Sagewood Weather Ledge



## Residential Design

Break the bounds of geography and select a stone style native to another region. Specify Dutch Quality Stone™ and your home will look as though you used natural stone. Yet you'll enjoy the lighter weight and cost savings only veneer stone can offer.







Natural Blend Weather Ledge





# Residential Design

When designing the home of your dreams, look to Dutch Quality Stone™ for that added architectural flare that garners the attention your home deserves.



Cypress Weather Ledge



Prestige Weather Ledge





Columbus Blend Limestone



Pennsylvania Ledgestone



Torino Weather Ledge

Residential Design

www.dutchqualitystone.com



# Commercial Applications

The same attention to detail you see when you look at our stone, you will also see on our production floor. Constant process improvement merged with automated technologies to handle high-volume orders with quick turn around times provides you with the stone you need...fast. The blend of our old-world craftsmanship and advanced production processes transform homes and commercial architecture into works of art.



Torino Weather Ledge / Torino Fieldstone



Cypress Weather Ledge



Natural Blend Weather Ledge



Ohio Tan Limestone





Natural Blend / Pennsylvania LedgeStone



Columbus Blend Limestone



# Commercial Applications

At Dutch Quality Stone™ you can expect an array of color options and stone selection. Also, our exceptional customer service and commitment to quality can give you the confidence that you deserve in a veneer stone manufacturer.



Sienna Castle Stone



Tan Dry Stack (Special)





Natural Blend Ledgestone / Pennsylvania Ledgestone



Arizona Dry Stack



# Landscaping

Greet the public by adding one of our versatile product lines to your entrance, walkway, or building wall. Our products are light weight, easy to install, and cost-effective. By adding Dutch Quality Stone™ to your future landscaping plans, you will get the look and beauty of natural stone at a fraction of the cost. Pictured below are classic examples of unique creations to which our stone has been applied.



Cypress Cobbled Limestone



Pennsylvania Weather Ledge / Pennsylvania Fieldstone



Natural Blend Ledge Stone / Tan Fieldstone



Ohio Tan Limestone





Tan Fieldstone



Ohio Tan Limestone



Pennsylvania Dry Stack



Pennsylvania Weather Ledge



Tan Weather Ledge



Tan Fieldstone / Tan Weather Ledge



# Landscaping

Create curb appeal by utilizing Dutch Quality Stone™ in extraordinary ways. As you will see on the various pages, the only limitation you have with our stone is your designers imagination.



Cypress Ledgestone / Cypress Fieldstone



Natural Blend Weather Ledge



# @ stone

---

D U T C H   Q U A L I T Y



[www.dutchqualitystone.com](http://www.dutchqualitystone.com)



# Weather Ledge

Our Weather Ledge is designed to give moderate shadow relief when grouted or when utilizing the dry-stack technique.

## Sizing:

Height: 1 ½" - 7 ½"

Length: 4" - 23"



Sagewood Weather Ledge



Tan Weather Ledge





Ashen



Cypress



Natural Blend



Pennsylvania



Prestige



Tan



Torino



Sagewood



Sienna





# Dry Stack

Dry Stack is one of our most efficient laying profiles that does not require a grout joint. This stone will allow for a tight fit without giving up valuable installation time.

## Sizing:

Length: 5" - 24"







Sienna



Pennsylvania



Cypress



Prestige



Ashen



Sienna Dry Stack

Product colors are as accurate as current photography allows. We recommend looking at product samples before selecting colors.



# Ledgestone

Our Ledgestone is our most irregular shaped profile. Ledgestone will add character to any application.

## Sizing:

Height: 1 1/2" to 6 1/2"

Length: 7 1/2" - 23"



Sagewood Ledgestone







Sagewood



Cypress



Sienna



Natural Blend



Pennsylvania



Prestige



Natural Blend Ledgestone

Product colors are as accurate as current photography allows. We recommend looking at product samples before selecting colors.



# Stack Ledge

Our Stack Ledge was designed with installation in mind. We've taken our Ledgestone and transformed it to become more installer-friendly by squaring the edges, thus allowing for a tighter fit.

## Sizing:

Height: 1 1/2" to 6 1/2"

Length: 7 1/2" - 21"







Sagewood



Sienna



Torino



Tan



Autumn Blend



Sienna Stack Ledge



# Limestone

Our Limestone collection gives a look of hand chiseled limestone in a selection of colors.

## Sizing:

Height: 2 ½" to 7 ½"

Length: 4" - 22"



Autumn Blend Limestone







Ohio Tan



Autumn Blend



Pennsylvania



Great Lakes



Kentucky Blend



Charcoal



Cypress



Ohio White Vein



Columbus Blend





# Cobbled Limestone

Cobbled Limestone will give you the look of limestone in its natural state.

## Sizing:

Height: 2 ½" to 7"

Length: 5" - 13"



Sienna Cobbled Limestone



Sienna Cobbled Limestone





Sienna



Cypress



Cypress Cobbled Limestone / Cypress Fieldstone



# Fieldstone

Our Fieldstone and Michigan Split Granite will give you a wide range of textures and unique formations.

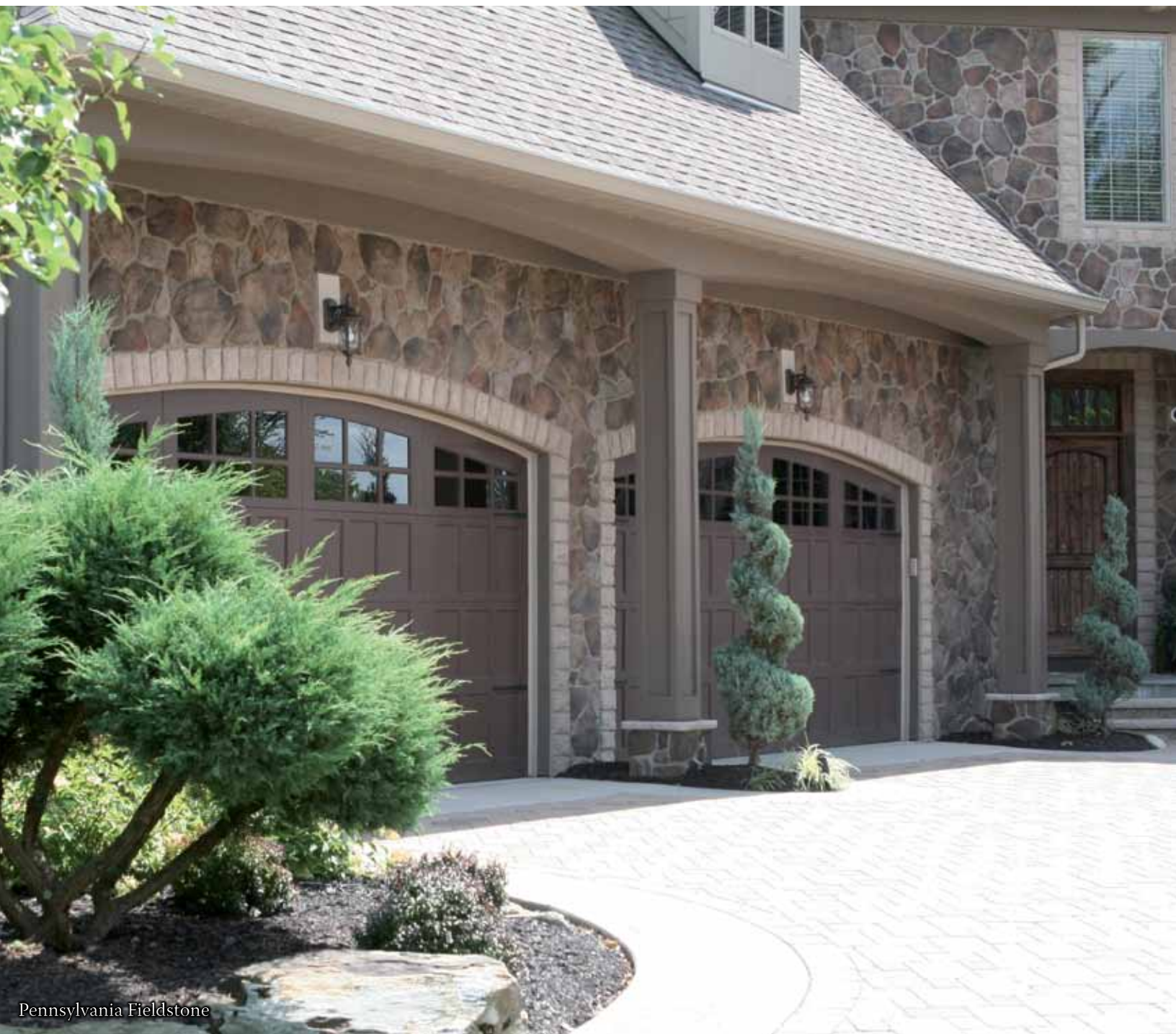
## Sizing:

Smallest: 5"

Largest: 22"



Sagewood Fieldstone







Cypress



Kentucky



Tan



Pennsylvania



Ashen



Sienna



Sagewood



Torino



Michigan Split Granite





# River Rock

Our River Rock has the authentic look of actual stones found in stream beds.

## Sizing:

Smallest: 4"

Largest: 20"



Buckeye River Rock



Kentucky River Rock





Buckeye



Kentucky



Michigan



Michigan River Rock



# Castle Stone

Castle Stone is a symmetrical shaped stone that allows for efficient laying with a tight fit without giving up valuable installation time.

## Sizing:

Length: 3" - 15"

Height: 3" - 15"



Sienna Castle Stone



Cypress Castle Stone





Cypress



Sienna



Sagewood



Torino



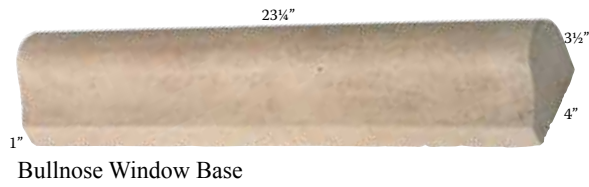
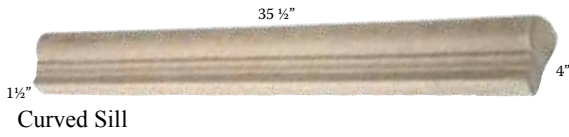
Sienna Castle Stone

Product colors are as accurate as current photography allows. We recommend looking at product samples before selecting colors.

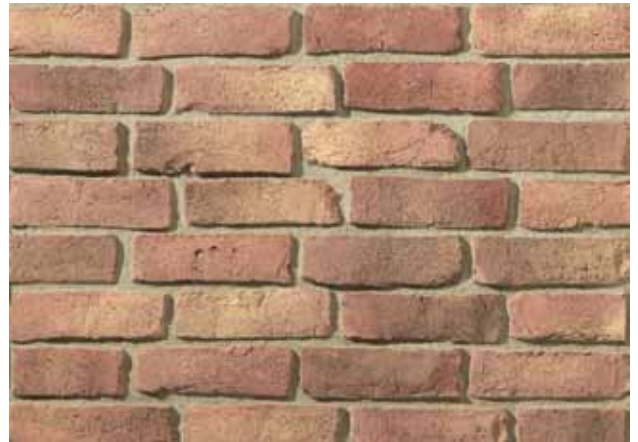


## Sills

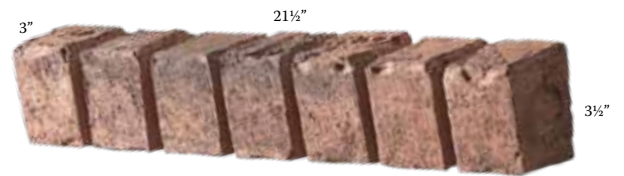
Available Colors: Tan, Taupe, Brown, Fogg, Grey



## Bric-Stone



## Brick Trim



## Window Trim

Available Colors: Tan, Taupe, Brown, Fogg, Grey





# Hearthstones

20" x 19" Hearthstones have the appearance of chiseled edges and weathered top surfaces for the perfect finishing touch. Hearthstones can be used in a variety of ways to compliment your Dutch Quality Stone™.



Granite Hearthstone



Brown Hearthstone



Fogg Hearthstone



Grey Hearthstone



Taupe Hearthstone



Tan Hearthstone

## Utility Accents

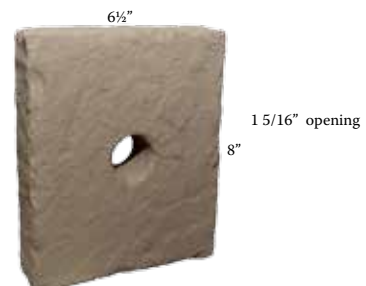
Available Colors: Tan, Taupe, Brown, Fogg, Grey



Light Block



Receptacle Block



Water Hydrant Block



# Accessories

## Capstones

Available Colors: Tan, Taupe, Brown, Fogg, Grey



Wall Cap  
12", 14", 16" x 23½"



Pier Cap  
22" x 22"  
30" x 30"

## Quoins

Available Colors: Tan, Taupe, Brown, Fogg, Grey



Quoin Corner  
8" x 8" x 12"



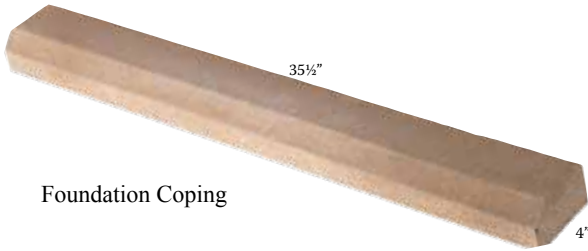
Quoin Flat  
8" x 23 ½"



Quoin Flat  
8" x 11 ½"

## Miscellaneous

Available Colors: Tan, Taupe, Brown, Fogg, Grey



Foundation Coping

35½"

4"



11"

10"

4"

90° Jumper Corners



135° Corners Available in  
Limestone Only



11"

11"

Jumper Flats

## Keystones

Available Colors: Tan, Taupe, Brown, Fogg, Grey



Jack Arch Wings

to be used with Large Chiseled Edge Keystone



8"

6"

9"

12"

11"

7"

Chiseled Edge Keystone 1 ½" Thick



10"

7"

12"


8"

12"

Brick Keystones 3 ½" deep



# Color Selection Guide

<b>Limestone</b> Columbus Blend Great Lakes Ohio Tan Kentucky Blend Pennsylvania Charcoal Autumn Blend Cypress Ohio White Vein	<b>Hearthstone</b> Tan Tan Tan Grey, Granite, Fogg Taupe, Brown Grey Brown Taupe, Brown Tan	<b>Accessories</b> Tan Tan Tan Grey, Fogg Taupe, Brown Grey Brown Taupe, Brown Tan	<b>Ledgestone</b> Prestige Natural Blend Pennsylvania Cypress Sagewood Sienna	<b>Hearthstone</b> Grey, Granite, Fogg Tan Taupe, Brown Taupe, Brown Taupe, Fogg Tan, Taupe, Brown	<b>Accessories</b> Grey, Fogg Tan Taupe, Brown Taupe, Brown Taupe, Fogg Tan, Taupe, Brown
<b>Weather Ledge</b> Ashen Torino Tan Natural Blend Prestige Pennsylvania Cypress Sagewood Sienna	<b>Hearthstone</b> Brown, Fogg Tan, Taupe Tan Tan Grey, Granite, Fogg Taupe, Brown Taupe, Brown Taupe, Fogg Tan, Taupe, Brown	<b>Accessories</b> Brown, Fogg Tan, Taupe Tan Tan Grey, Fogg Taupe, Brown Taupe, Brown Taupe, Fogg Tan, Taupe, Brown	<b>Fieldstone</b> Ashen Kentucky Tan Pennsylvania Cypress Sagewood Sienna Michigan Split Granite	<b>Hearthstone</b> Brown, Fogg Grey, Granite Tan Taupe, Brown Taupe, Brown Taupe, Fogg Tan, Taupe, Brown Granite, Grey	<b>Accessories</b> Brown, Fogg Grey Tan Taupe, Brown Taupe, Brown Taupe, Fogg Tan, Taupe, Brown Grey
<b>Stack Ledge</b> Sagewood Sienna Tan Autumn Blend Torino	<b>Hearthstone</b> Taupe, Fogg Tan, Taupe, Brown Tan Brown Tan, Taupe	<b>Accessories</b> Taupe, Fogg Tan, Taupe, Brown Tan Brown Tan, Taupe	<b>River Rock</b> Buckeye Michigan Kentucky	<b>Hearthstone</b> Brown Granite, Grey Grey, Granite	<b>Accessories</b> Brown Grey Grey
<b>Cobbled Limestone</b> Cypress Sienna	<b>Hearthstone</b> Taupe, Brown Tan, Taupe, Brown	<b>Accessories</b> Taupe, Brown Tan, Taupe, Brown	<b>Dry Stack</b> Pennsylvania Cypress Prestige Sienna Ashen	<b>Hearthstone</b> Taupe, Brown Taupe, Brown Grey, Granite, Fogg Tan, Taupe, Brown Brown, Fogg	<b>Accessories</b> Taupe, Brown Taupe, Brown Grey, Fogg Tan, Taupe, Brown Brown, Fogg
<b>Castle Stone</b> Cypress Sienna Sagewood Torino	<b>Hearthstone</b> Taupe, Brown Tan, Taupe, Brown Taupe, Fogg Tan, Taupe	<b>Accessories</b> Taupe, Brown Tan, Taupe, Brown Taupe, Fogg Tan, Taupe	<div style="text-align: center;">  <p><b>Mortar Tint</b></p> <p>Available in: Brown, Taupe and Tan</p> </div>		



Columbus Blend Limestone



# Profile Index



*Ashen Weather Ledge*  
pg. 35



*Cypress Weather Ledge*  
pg. 24, 26, 35



*Natural Blend Weather Ledge*  
pg. 7, 19, 23, 26, 32, 35



*Pennsylvania Weather Ledge*  
pg. 10, 18, 30, 31, 35, 59



*Prestige Weather Ledge*  
pg. 4, 19, 24, 35



*Sagewood Weather Ledge*  
pg. 6, 21, 34, 35



*Sienna Weather Ledge*  
pg. 20, 35



*Tan Weather Ledge*  
pg. 5, 21, 31, 34, 35



*Torino Weather Ledge*  
pg. 25, 26, 35



*Ashen Dry Stack*  
pg. 37



*Cypress Dry Stack*  
pg. 36, 37



*Pennsylvania Dry Stack*  
pg. 31, 37



*Prestige Dry Stack*  
pg. 37



*Sienna Dry Stack*  
pg. 22, 36, 37



*Cypress Ledge stone*  
pg. 5, 32, 39



*Natural Blend Ledge stone*  
pg. 14, 15, 17, 20, 27, 29, 30, 39



*Pennsylvania Ledge stone*  
pg. 5, 10, 11, 12, 13, 16, 20, 25, 27, 29, 38, 39



*Prestige Ledge stone*  
pg. 39



*Sagewood Ledge stone*  
pg. 7, 11, 12, 16, 38, 39



*Sienna Ledge stone*  
pg. 39



*Autumn Blend Stack Ledge*  
pg. 41



*Sagewood Stack Ledge*  
pg. 40, 41



*Sienna Stack Ledge*  
pg. 13, 41



*Tan Stack Ledge*  
pg. 41



*Torino Stack Ledge*  
pg. 41





*Autumn Blend Limestone*  
pg. 20, 42, 43



*Cypress Limestone*  
pg. 43, 58



*Columbus Blend Limestone*  
pg. 8, 25, 27, 43, 55



*Great Lakes Limestone*  
pg. 9, 42, 43



*Kentucky Blend Limestone*  
pg. 43



*Ohio Tan Limestone*  
pg. 9, 26, 30, 31, 43



*Pennsylvania Limestone*  
pg. 19, 43



*Cypress Cobbled Limestone*  
pg. 6, 9, 30, 45, 59



*Sienna Cobbled Limestone*  
pg. 44, 45



*Ashen Fieldstone*  
pg. 47



*Cypress Fieldstone*  
pg. 5, 6, 9, 32, 45, 47



*Kentucky Fieldstone*  
pg. 6, 8, 18, 22, 23, 47



*Pennsylvania Fieldstone*  
pg. 5, 6, 11, 20, 30, 46, 47, 59



*Sagewood Fieldstone*  
pg. 4, 7, 46, 47



*Sienna Fieldstone*  
pg. 47



*Tan Fieldstone*  
pg. 19, 30, 31, 47



*Torino Fieldstone*  
pg. 26, 47



*Buckeye River Rock*  
pg. 48, 49



*Kentucky River Rock*  
pg. 48, 49



*Michigan River Rock*  
pg. 49



*Cypress Castle Stone*  
pg. 9, 50, 51



*Sagewood Castle Stone*  
pg. 51



*Sienna Castle Stone*  
pg. 19, 28, 50, 51



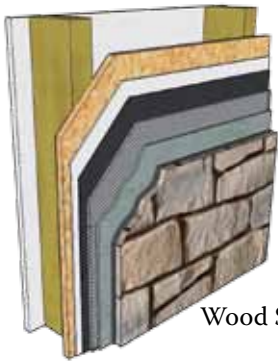
*Torino Castle Stone*  
pg. 51





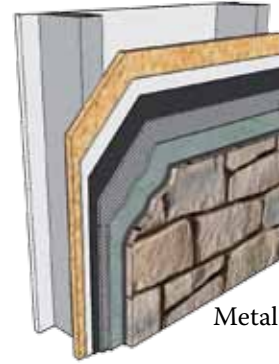
# Installation Techniques

The following illustrations depict typical stone installation scenarios. For full detailed installation procedures please view our documentation located at [www.dutchqualitystone.com](http://www.dutchqualitystone.com).



sheathing  
weather resistant barrier  
weather resistant barrier  
metal lath  
scratch coat  
setting bed  
Dutch Quality Stone™

Wood Stud Installation



sheathing  
weather resistant barrier  
weather resistant barrier  
metal lath  
scratch coat  
setting bed  
Dutch Quality Stone™

Metal Stud Installation



scratch coat  
setting bed  
Dutch Quality Stone™

Clean Masonry Installation



rigid board  
weather resistant barrier  
weather resistant barrier  
metal lath  
scratch coat  
setting bed  
Dutch Quality Stone™

Rigid Board Installation







Pennsylvania Weather Ledge / Pennsylvania Fieldstone

**Warranty**

*Dutch Quality Stone™, Inc., warrants, subject to the terms and conditions of the full written warranty, that its manufactured concrete products shall be free from defect in materials, manufacturing, and workmanship for a period of 50 years from the date of purchase. The manufacturer will not be liable for any cracked or damaged product due to mishandling, building settlement, improper installation, discoloration due to airborne contaminants, or acts of God beyond the control of the manufacturer. This warranty is limited to the original purchaser and may not be transferred. (Complete manufacturer's warranty is available on our website. [www.dutchqualitystone.com](http://www.dutchqualitystone.com))*

**Additional Notes**

*Just as natural stone will vary in color, Dutch Quality Stone™ will reflect some degree of variation in color. Actual stone color may vary from brochure. It may also vary from existing structures. Veneer stone is not intended and will not hold up to foot traffic. Like any other cement product, under certain weather temperatures and conditions, stone may have signs of efflorescence. Just as natural stone shows signs of scuffing, occasionally Dutch Quality Stone™ will have light scuffing. With proper handling, there should not be heavy scuffing. Dutch Quality Stone™ is not responsible for discoloration due to run-off from adjacent building materials. For answers to any questions not covered in this brochure, please contact us. 1-877-359-7866 For detailed installation instructions, specifications, technical information, and product evaluations, visit us online at [www.dutchqualitystone.com](http://www.dutchqualitystone.com).*

*Dutch Quality Stone™ is a charter member of the MVMA. Dutch Quality Stone™ meets or exceeds all ICC acceptance criteria. See ICC-ES Evaluation Report No. 1942 at [www.icc-es.org](http://www.icc-es.org).*



Cypress Cobbled Limestone

Warranty

www.dutchqualitystone.com



# DUTCH QUALITY STONE™

IS WHERE CRAFTSMANSHIP AND TECHNOLOGY MEET

*Nestled in Wayne County, Ohio, Dutch Quality Stone™ has been at the forefront of advanced stone replication for over a decade, perfecting the process of recreating incredibly vivid stone products.*

*Known as the "Gateway to Amish Country," Wayne County is home to a wealth of skilled artisans, many of whom are employed at Dutch Quality Stone™.*

*It's Different out here. When values such as honesty, old-fashioned work ethic and service are combined with advanced production techniques, our Wayne County home becomes another reason Dutch Quality Stone™ is the best choice for your project.*

MT EATON, OHIO 44659

PHONE: 330.359.7866

FAX: 330.359.5990

1.877.359.7866

WWW.DUTCHQUALITYSTONE.COM

DISTRIBUTED BY:



