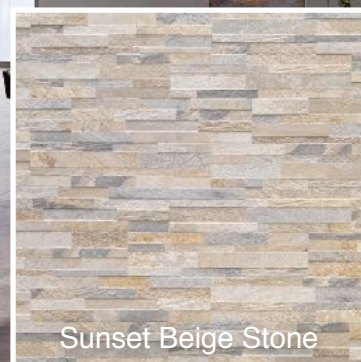




Portofino Porcelain Stone Collection



Sunset Beige Stone

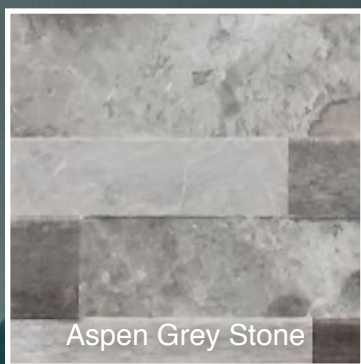


Oyster Grey Stone



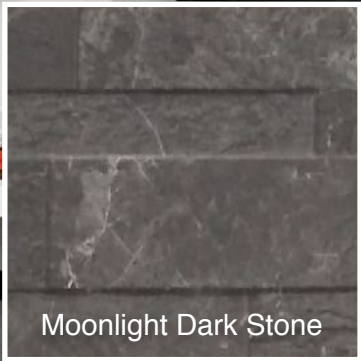


Calacatta White Stone



Aspen Grey Stone

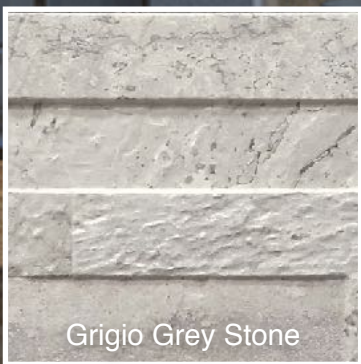




Moonlight Dark Stone



Sandy Beige Stone



Grigio Grey Stone

Portofino Porcelain Collection

The advantages of using Portofino Porcelain stone to enhance the overall beauty of any residential or commercial project are numerous. Not only does it offer the aesthetic beauty of natural stone or wood, it offers a more practical solution for every day wear and tear. Virtually maintenance free, it is easy to clean and perfect for any interior or exterior application. Its three dimensional design, varied color pallets and contrasting tones provide depth and warmth to any architectural space.

Portofino Porcelain is easy to install. Each panel is laser cut to measure 6" x 24" and is lightweight. The Portofino Porcelain stone line has successfully captured nature's authentic beauty while maintaining consistent quality transforming the ordinary to the extraordinary. Its beauty speaks for itself.



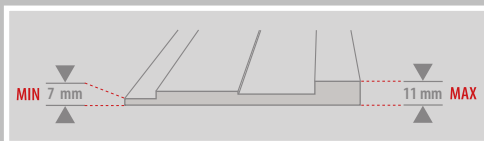
Key Features

- Manufactured porcelain tile made to look like natural stone or wood
- Captures the colors and variations found in nature combined with a consistent quality
- Three dimensional design lends itself to a replica of an authentic natural stone
- Each panel measures 6" x 24" for easy installation
- Perfect for interior or exterior applications
- Carefully crafted color pallets designed to enhance transitional and contemporary spaces
- Practical for any application, especially commercial uses, as it is much easier to clean than natural stone

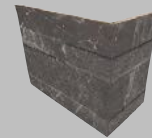
Flat Panels



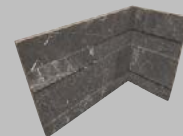
6" x 24"



Corner Pieces



8 1/4" x 4 2/4" x 6"



7 2/3" x 3 3/4" x 6"

Authorized Distributor:

BRICKAMERICA®
Quality Hardscape and Masonry Materials

1800 NW 22nd Street, Ft. Lauderdale, Florida 33311
866.866.2529 Toll Free, www.BrickAmerica.com