



CORONADO[®]

STONE PRODUCTS



Colosseum Travertine - Roman

OVER
65 YEARS
EST. 1959

TABLE OF CONTENTS



Sonora Sandstone
Blue Heron



Smooth Limestone
Cream



Barn WoodStone
Rustic Farmhouse



Italian Villa®
Volterra



Weathered Edge
Coal Canyon

NEW PRODUCTS

Urbana Smooth	1
Urbana Split	2
Sonora Sandstone	3
Element LedgeStone	4

THE CLASSIC SERIES

8" Classic Jerusalem	7
Smooth Limestone	8
French Limestone	9
Chiseled Limestone	10
Hill Country Limestone	11
Colosseum Travertine	12
Aegean Coral, Caribbean Coral	13
The Getty Stone	14
Sand Canyon Flagstone	15
Decorative Bands	16

WOODSTONE SERIES

Barn WoodStone	19
Rough Cut WoodStone	20
Refined WoodStone	21 - 22

THE DESIGNER SERIES

Playa Vista Limestone	25
Amalfi Ledge	26
3" Split Limestone	27
6" Split Limestone	28
Prairie Stone	29
Industrial Ledge	30

CUT STONE SERIES

Pavilion Stone	31 - 32
Canyon Cobble	33
Osage	34

VILLA STONE SERIES

Venetian Villa®	37 - 38
Italian Villa®	39 - 40
Tuscan Villa®	41 - 42
French Country Villa®	43 - 44

LEDGESTONE SERIES

Mountain Strip Stone	47
Coronado Strip Stone	48
Pro-Ledge®	49 - 50
Coronado Honey Ledge	51 - 52
Sawtooth Ledge	53
Artisan Ledge	54
Quick Stack®	55 - 56
Virginia Ledge	57
Sierra Ledge	58
Eastern Mountain Ledge®	59 - 60



Country Rubble
Aspen



Minnesota Fieldstone
Coastal Brown



Special Used Brick
Rustic Blend



Brick Corner
Rustic Blend



Flagstone Wall Cap
Lompoc

TABLE OF CONTENTS

LEDGESTONE SERIES CONT.

Old World Ledge	61 - 62
Old Country Ledge	63 - 64
Rocky Mountain Ledge	65
Canyon Ledge	66
Idaho Drystack	67 - 68
Weathered Edge	69 - 70

ASHLAR & RUBBLE SERIES

Country Rubble	73 - 74
Texas Rubble	75
Carolina Rubble	76
English Rubble	77 - 78
Santa Barbara	79 - 80
Country Castle	81
Belgian Castle	82

IRREGULAR SHAPED STONE SERIES

Minnesota Fieldstone	85 - 86
Appalachian Fieldstone	87 - 88
Split Fieldstone	89
Viejo Ranch	90
River Rock	91
Creek Rock	92

STONE COMBINATIONS

Stone Combinations	95 - 96
--------------------------	---------

THIN BRICK SERIES

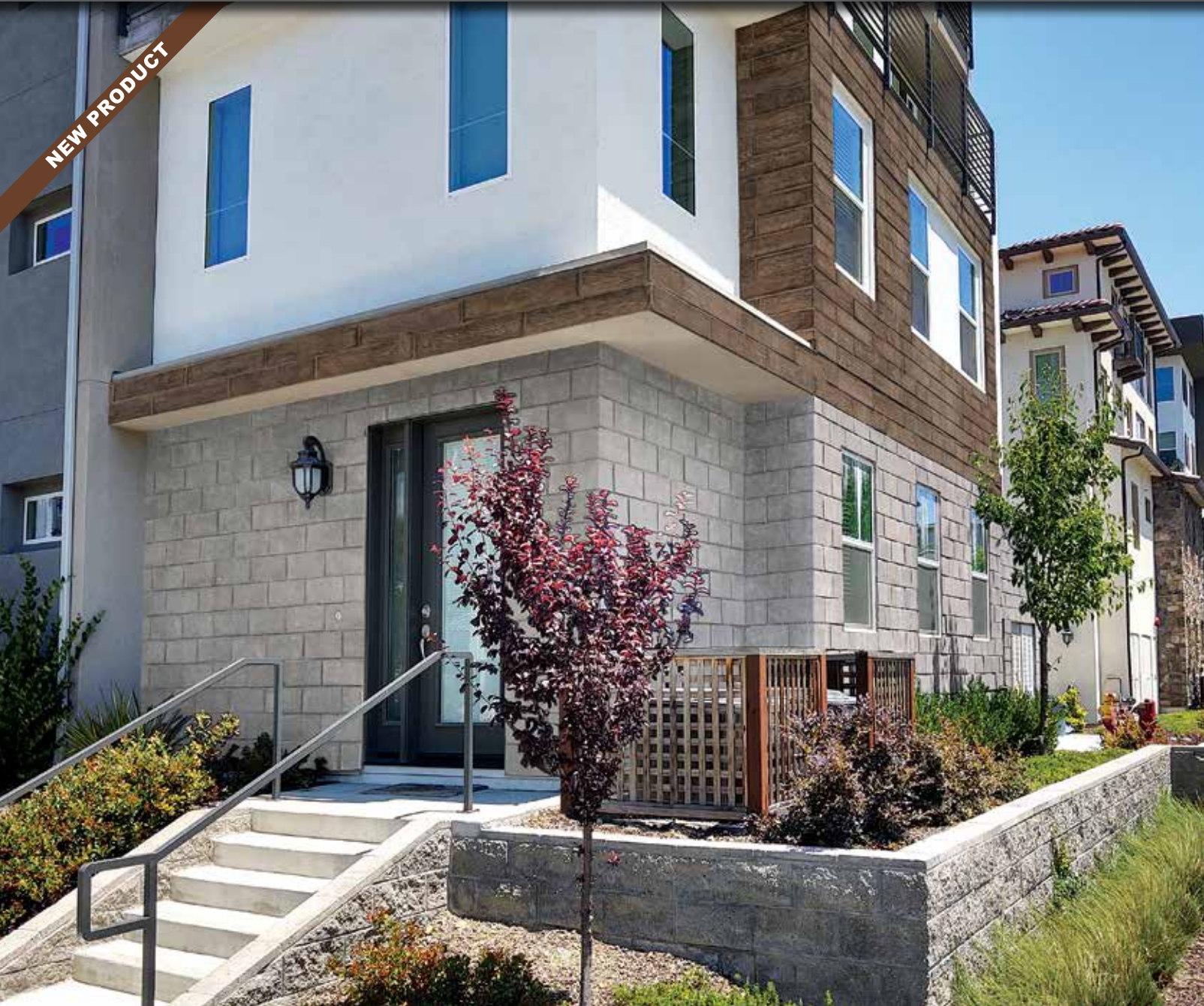
Sand Mold Brick	99
Belgian Brick	100
Special Used Brick	101 - 102
Sculptured Brick	103
Clinker Brick	104
Wirecut Brick	105 - 106
Sicilian Brick	107
Roman Brick	108
Weathered Brick	109
New England Brick	110
Adobe Brick	111 - 112

TRIM & ACCESSORIES

Sills, Lintels & Mantels	115
Window Stones, Trim Stones, Hearthstones & Boxes	116
Wall Caps & Post Caps	117
Brick Accessories	118
Grouting Options	119 - 120

TECHNICAL DATA

Technical Data	123 - 124
Coronado Stone Sizes	125
Stone Color Index & Project Image Credits	126
Limited Warranty	127
Nationwide Manufacturing	128



Urbana Smooth - Silver Ash (Also Shown Refined WoodStone - Blackened Oak)



Urbana Split - Grey Granite



Urbana Smooth
French White



Urbana Smooth
Country Beige



Urbana Smooth
Silver Ash



Urbana Split
Grey Granite



Urbana Split
Smoke



Urbana Split
French White

NEW PRODUCT



Sonora Sandstone - *Blue Heron*

NEW PRODUCT



Element Ledgestone - *Silver Ash*



Sonora Sandstone
French White



Sonora Sandstone
Country Beige



Sonora Sandstone
Blue Heron



Element Ledgestone
Mount Vernon



Element Ledgestone
Northland



Element Ledgestone
White



THE CLASSIC SERIES

These alluring oversized tiles were created to mimic the elegant stone adorning some of the most stunning architectural wonders of the world. The exquisite textures included in this series range from finely detailed limestone to deeply eroded travertine. Each profile flows well with both Classical and Modern design styles.

French Limestone - *Silver Ash*



8" Classic Jerusalem - *Sahara Beige*



Smooth Limestone - *Cream*



8" Classic Jerusalem
Silver Ash



8" Classic Jerusalem
Sahara Beige



8" Classic Jerusalem
Cayenne



Smooth Limestone
Harvard Grey



Smooth Limestone
Cream



Smooth Limestone
White Sands



French Limestone - *Country Beige* with 4" Chiseled Limestone Band



Chiseled Limestone - *Cream*



French Limestone
French White



French Limestone
Country Beige



French Limestone
Silver Ash



Chiseled Limestone
Sunriver Blend



Chiseled Limestone
Silver Ash



Chiseled Limestone
Cream



Hill Country Limestone - *Bandera*



Colosseum Travertine - *Roman*



Hill Country Limestone
Cream



Hill Country Limestone
Bandera



Hill Country Limestone
Chalk



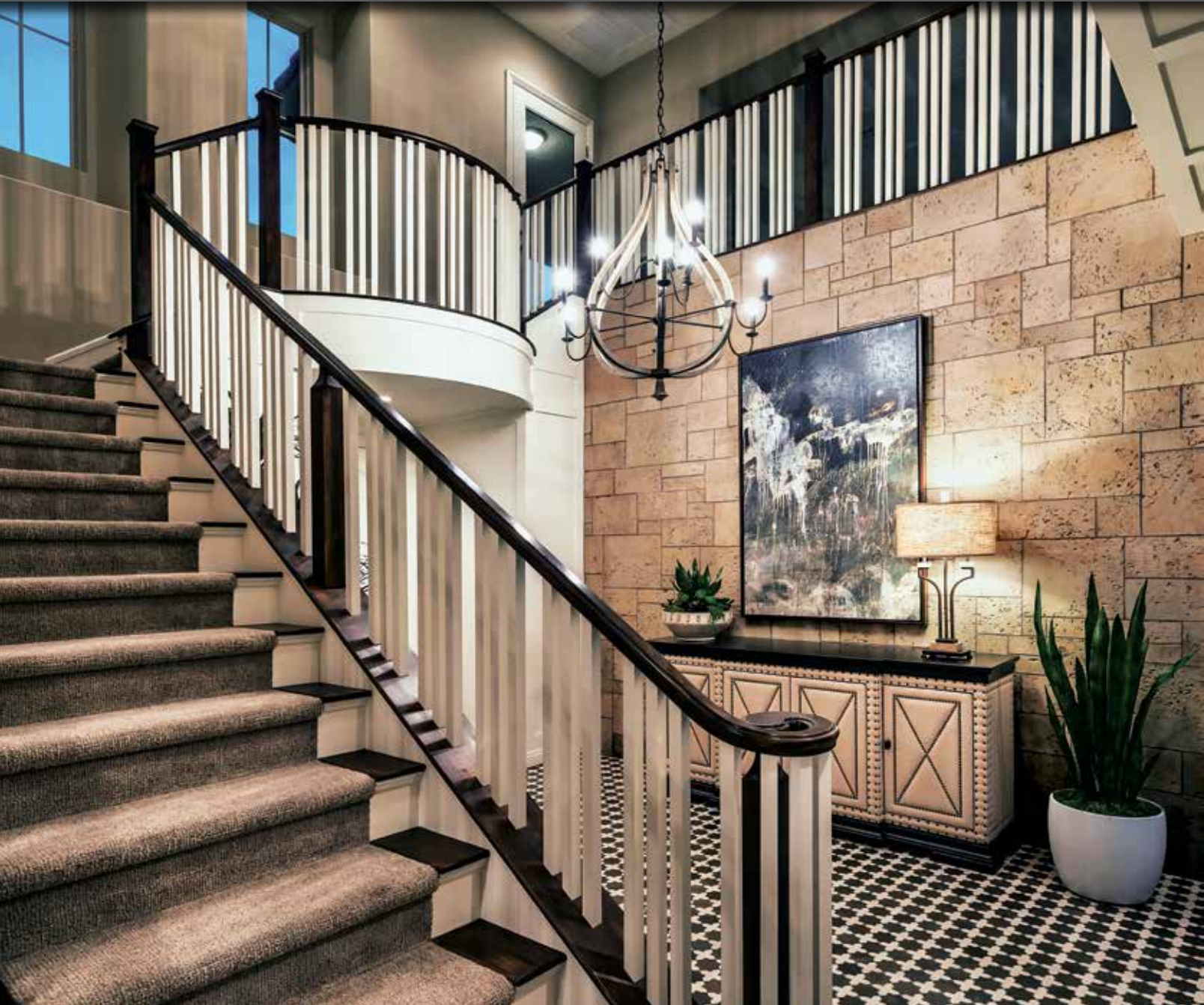
Colosseum Travertine
Roman



Colosseum Travertine
Mushroom



Colosseum Travertine
Black Forest



Caribbean Coral - Santorini Blend (Ashlar Pattern)



The Getty Stone - Embassy Blend



Caribbean Coral
Cream (Ashlar Pattern)



Aegean Coral
Santorini Blend (Coursed Pattern)



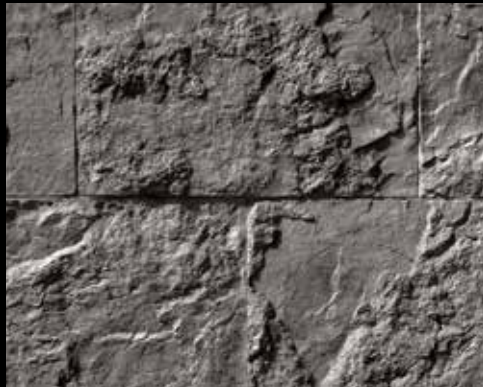
Aegean Coral
Barbados (Coursed Pattern)



The Getty Stone
Embassy Blend



The Getty Stone
Silver Ash



The Getty Stone
Black Forest



Sand Canyon Flagstone - *Desert Beige*



Chiseled Limestone - *Cream* with 4" Chiseled Limestone Band - *Silver Ash*



Sand Canyon Flagstone
Palomar Blend



Sand Canyon Flagstone
Desert Beige



Sand Canyon Flagstone
Cream



Smooth Limestone - *Cream*
6" Split Limestone - *Cream*



French Limestone - *Country Beige*
6" Chiseled Limestone - *Cream*



Chiseled Limestone - *Cream*
4" Chiseled Limestone - *Silver Ash*



WOODSTONE SERIES

The WoodStone Series features three distinct textures that replicate the look and feel of natural wood. This durable thin concrete veneer is fire-resistant and extremely cost effective when compared to its natural alternative.

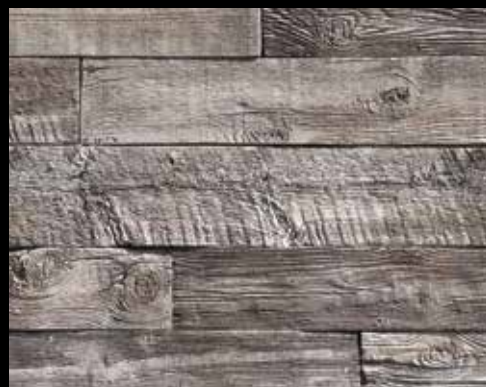
Barn WoodStone - Rustic Farmhouse



Barn WoodStone - *Cannery Blend*



Rough Cut WoodStone - *Deadwood*



Barn WoodStone
Rustic Farmhouse



Barn WoodStone
Cannery Blend



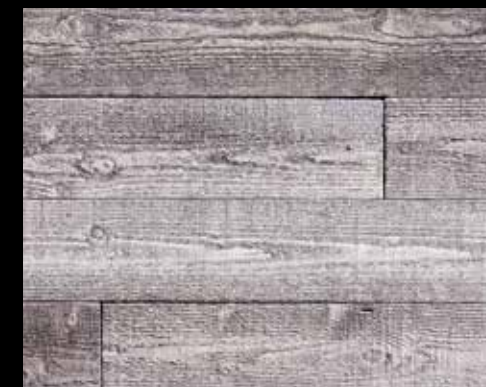
Barn WoodStone
Old Frontier



Rough Cut WoodStone
Rustic Cedar



Rough Cut WoodStone
Cedar



Rough Cut WoodStone
Deadwood



Refined WoodStone - *Blackened Oak*



Refined WoodStone - *Blackened Oak*



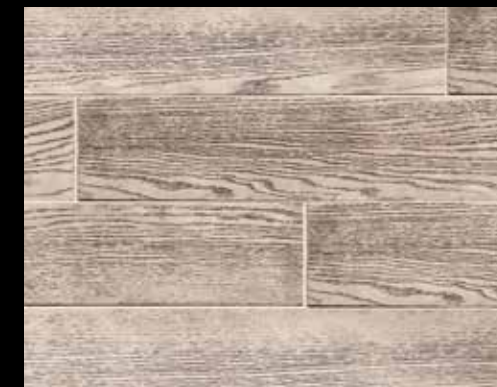
Refined WoodStone - *Antique White*



Refined WoodStone
Blackened Oak



Refined WoodStone
Deadwood



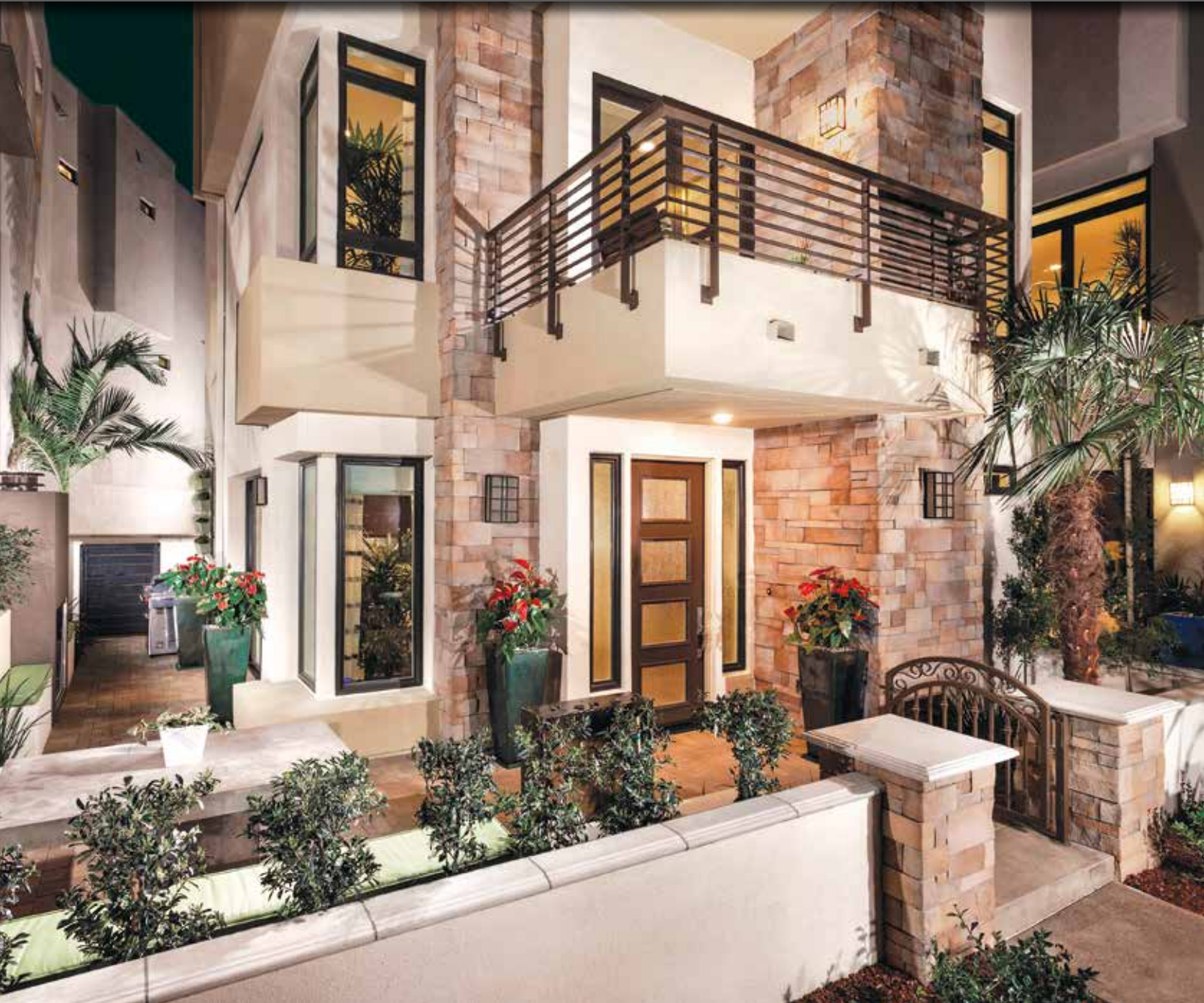
Refined WoodStone
Antique White



THE DESIGNER SERIES

This unique series contains a variety of stylish modern profiles. These sleek, highly-textured veneers were created for the designer looking to add a touch of minimalistic style to their project. The continuous linear patterns compliment both modern and contemporary architectural designs.

Playa Vista Limestone - Cream



Playa Vista Limestone - *Alaskan Sunset (Ashlar Pattern)*



Amalfi Ledge - *Salerno*



Playa Vista Limestone
Walnut (Coursed Pattern)



Playa Vista Limestone
Alaskan Sunset (Coursed Pattern)



Playa Vista Limestone
Cream (Coursed Pattern)



Amalfi Ledge
Winter Alps



Amalfi Ledge
Pompeii



Amalfi Ledge
Marianna



3" Split Limestone
Vista Pointe



3" Split Limestone
Cream



3" Split Limestone
Black Forest



3" Split Limestone - Genoa Sands



6" Split Limestone - Cream



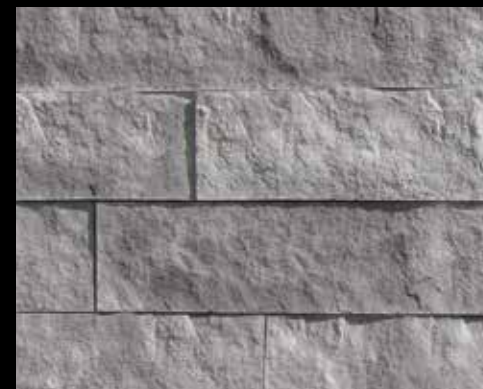
3" Split Limestone
White



3" Split Limestone
Walnut



3" Split Limestone
Grey



6" Split Limestone
Summit Grey



6" Split Limestone
Cream



6" Split Limestone
White



Prairie Stone - *Grey Granite*



Industrial Ledge - *Shale Grey*



Prairie Stone
Grey Granite



Prairie Stone
Mocha Granite



Prairie Stone
Smoke



Industrial Ledge
Blackened Oak



Industrial Ledge
Shale Grey



Industrial Ledge
Oakbrook



CUT STONE SERIES

The Cut Series features a variety of profiles that replicate the look of natural thin-cut veneer selected from quarries across North America. The gorgeous natural textures and rich color hues highlight the inherent beauty that make these stone veneer styles so desirable within the design community.

Pavilion Stone - *Pine Creek*



Canyon Cobble - Indian Springs



Osage - Fossil Bay



Canyon Cobble
Wind River



Canyon Cobble
Indian Springs



Canyon Cobble
Palazzo



Osage
Fossil Bay



Osage
Cape Cod Grey



Osage
Ancient Reef



VILLA STONE SERIES

We searched up and down the Mediterranean coast to find the perfect blend of stone shapes and textures that embodied European old world architecture. Our Villa Stone profiles exemplify the unique characteristics of some of the most sought after types of stone adorning villas and chateaus across Europe.

French Country Villa® - Bordeaux



Venetian Villa® - Coastal Brown (Grouted)



Venetian Villa® - Madison County (Grouted)



Venetian Villa®
Chalk (Dry Stacked)



Venetian Villa®
Sunset Blend (Grouted)



Venetian Villa®
Coastal Brown (Grouted)



Venetian Villa®
Madison County (Grouted)



Venetian Villa®
Grey (Grouted)



Venetian Villa®
Palazzo (Dry Stacked)



Italian Villa® - *Provo Canyon Grey*



Italian Villa®
Provo Canyon Grey



Italian Villa®
Verona



Italian Villa®
Chablis



Italian Villa® - *Volterra*

Italian Villa® - *Volterra*



Italian Villa®
Dakota Brown



Italian Villa®
Volterra



Italian Villa®
Champagne



Tuscan Villa® - *Florentine*



Tuscan Villa® - *Prairie Moss*



Tuscan Villa®
Dakota Brown



Tuscan Villa®
Seville



Tuscan Villa®
Florentine



Tuscan Villa®
Coal



Tuscan Villa®
Prairie Moss



Tuscan Villa®
Romano



French Country Villa® - *Volterra*



French Country Villa® - *Grey Quartzite*



French Country Villa®
Volterra



French Country Villa®
Chablis



French Country Villa®
Verona



French Country Villa®
Bordeaux



French Country Villa®
Champagne



French Country Villa®
Grey Quartzite



LEDGESTONE SERIES

We feature a vast selection of ledgerstone profiles which replicate some of the most beautiful quarried ledgerstones from around the country. Choose from a wide array of shapes, sizes and colors to compliment any architectural project, ranging from rustic to contemporary in style.

Idaho Drystack - Smokey Grey



Mountain Strip Stone - *Brookside*



Coronado Strip Stone - *Fawn*



Mountain Strip Stone
Brookside



Mountain Strip Stone
Chablis



Mountain Strip Stone
Cape Cod Grey



Coronado Strip Stone
Black Forest



Coronado Strip Stone
White



Coronado Strip Stone
Fawn



Pro-Ledge® - Black Forest



Pro-Ledge® - White



Pro-Ledge® - Brookside



Pro-Ledge®
Oakbrook



Pro-Ledge®
Huron



Pro-Ledge®
Brookside



Pro-Ledge®
Black Forest



Pro-Ledge®
Alaskan Sunset



Pro-Ledge®
White



Coronado Honey Ledge - Carmel Mountain



Coronado Honey Ledge - Shasta



Coronado Honey Ledge
Shasta



Coronado Honey Ledge
Grey Quartzite



Coronado Honey Ledge
Huron



Coronado Honey Ledge
Palomino



Coronado Honey Ledge
Chablis



Coronado Honey Ledge
Carmel Mountain



Coronado Honey Ledge
Four Rivers



Coronado Honey Ledge
Sioux Falls



Coronado Honey Ledge
Rocky Mountain Rundle



Sawtooth Ledge - *Silver Ash*



Artisan Ledge - *Falmouth*



Sawtooth Ledge
Northland



Sawtooth Ledge
Mount Vernon



Sawtooth Ledge
Vista Pointe



Artisan Ledge
Huron



Artisan Ledge
Falmouth



Artisan Ledge
Cathedral Grey



Quick Stack® - *Cape Cod Grey*



Quick Stack® - *Carmel Mountain*



Quick Stack®
Antique Cream



Quick Stack®
Cape Cod Grey



Quick Stack®
Carmel Mountain



Quick Stack® - *Cathedral Grey*



Quick Stack®
Cathedral Grey



Quick Stack®
Coastal Brown



Quick Stack®
Aspen



Virginia Ledge - Cape Cod Grey



Sierra Ledge - Falmouth



Virginia Ledge
Golden Sand



Virginia Ledge
Cape Cod Grey



Virginia Ledge
Hillside



Sierra Ledge
Brookside



Sierra Ledge
Falmouth



Sierra Ledge
Cathedral Grey



Eastern Mountain Ledge® - *Dakota Brown*



Eastern Mountain Ledge® - *Carmel Mountain*



Eastern Mountain Ledge®
Grey Quartzite



Eastern Mountain Ledge®
Provo Canyon Grey



Eastern Mountain Ledge®
Carmel Mountain



Eastern Mountain Ledge®
Chablis



Eastern Mountain Ledge®
Madison County



Eastern Mountain Ledge®
Vista Pointe



Eastern Mountain Ledge®
Coastal Brown



Eastern Mountain Ledge®
Palmetto Blend



Eastern Mountain Ledge®
Huron



Old World Ledge - Huron (Dry Stacked)



Old World Ledge - Birch Grove (Dry Stacked)



Old World Ledge
Antique Cream (Dry Stacked)



Old World Ledge
Vista Pointe (Dry Stacked)



Old World Ledge
Grey Quartzite (Grouted)



Old World Ledge
Etowah (Dry Stacked)



Old World Ledge
Chablis (Dry Stacked)



Old World Ledge
Huron (Dry Stacked)



Old World Ledge
Monarch (Dry Stacked)



Old World Ledge
Birch Grove (Dry Stacked)



Old World Ledge
Brookside (Grouted)



Old Country Ledge - Banff (Dry Stacked)



Old Country Ledge - Carmel Mountain (Dry Stacked)



Old Country Ledge
Monarch (Dry Stacked)



Old Country Ledge
Cape Cod Grey (Dry Stacked)



Old Country Ledge
Etowah (Dry Stacked)



Old Country Ledge
Huron (Dry Stacked)



Old Country Ledge
Greycliffe (Dry Stacked)



Old Country Ledge
Banff (Dry Stacked)



Old Country Ledge
Monticello (Dry Stacked)



Old Country Ledge
Coastal Brown (Grouted)



Old Country Ledge
Carmel Mountain (Grouted)



Rocky Mountain Ledge
Copper Canyon (Dry Stacked)



Rocky Mountain Ledge
Meadow Springs (Dry Stacked)



Rocky Mountain Ledge
Sandy Peaks (Dry Stacked)



Rocky Mountain Ledge - *Copper Canyon (Dry Stacked)*



Canyon Ledge - *Dakota Brown (Grouted)*



Rocky Mountain Ledge
Bitterroot (Grouted)



Rocky Mountain Ledge
Greycliffe (Dry Stacked)



Rocky Mountain Ledge
Black Rundle (Dry Stacked)



Canyon Ledge
Cape Cod Grey (Dry Stacked)



Canyon Ledge
Dakota Brown (Dry Stacked)



Canyon Ledge
Brookside (Dry Stacked)



Idaho Drystack - *Antique Buff*



Idaho Drystack - *Carmel Mountain*



Idaho Drystack
Antique Buff



Idaho Drystack
Grey Quartzite



Idaho Drystack
Cape Cod Grey



Idaho Drystack
Aspen



Idaho Drystack
Smokey Grey



Idaho Drystack
Carmel Mountain



Weathered Edge - *Coal Canyon*



Weathered Edge - *Sunhill Blend*



Weathered Edge - *Foxhill Blend*



Weathered Edge
Coal Canyon



Weathered Edge
Sunhill Blend



Weathered Edge
Foxhill Blend



ASHLAR & RUBBLE SERIES

The skillfully handcrafted stones from this series can be traced back to times when artisan masons meticulously chiseled blocks of limestone to construct majestic structures. These magnificent stone profiles possess wonderfully sculpted textures and can be installed in an ashlar or coursed pattern.

Carolina Rubble - Sandstone



Country Rubble - Grey Quartzite (Dry Stacked)



Country Rubble - Aspen (Grouted)



Country Rubble
Antique Cream (Dry Stacked)



Country Rubble
Texas Cream (Grouted)



Country Rubble
Aspen (Dry Stacked)



Country Rubble
Coastal Brown (Dry Stacked)



Country Rubble
Dakota Brown (Grouted)



Country Rubble
Grey Quartzite (Grouted)



Texas Rubble - *Texas Cream*



Carolina Rubble - *Sandstone*



Texas Rubble
Antique Cream



Texas Rubble
Texas Cream



Texas Rubble
Cape Cod Grey



Carolina Rubble
Sandstone



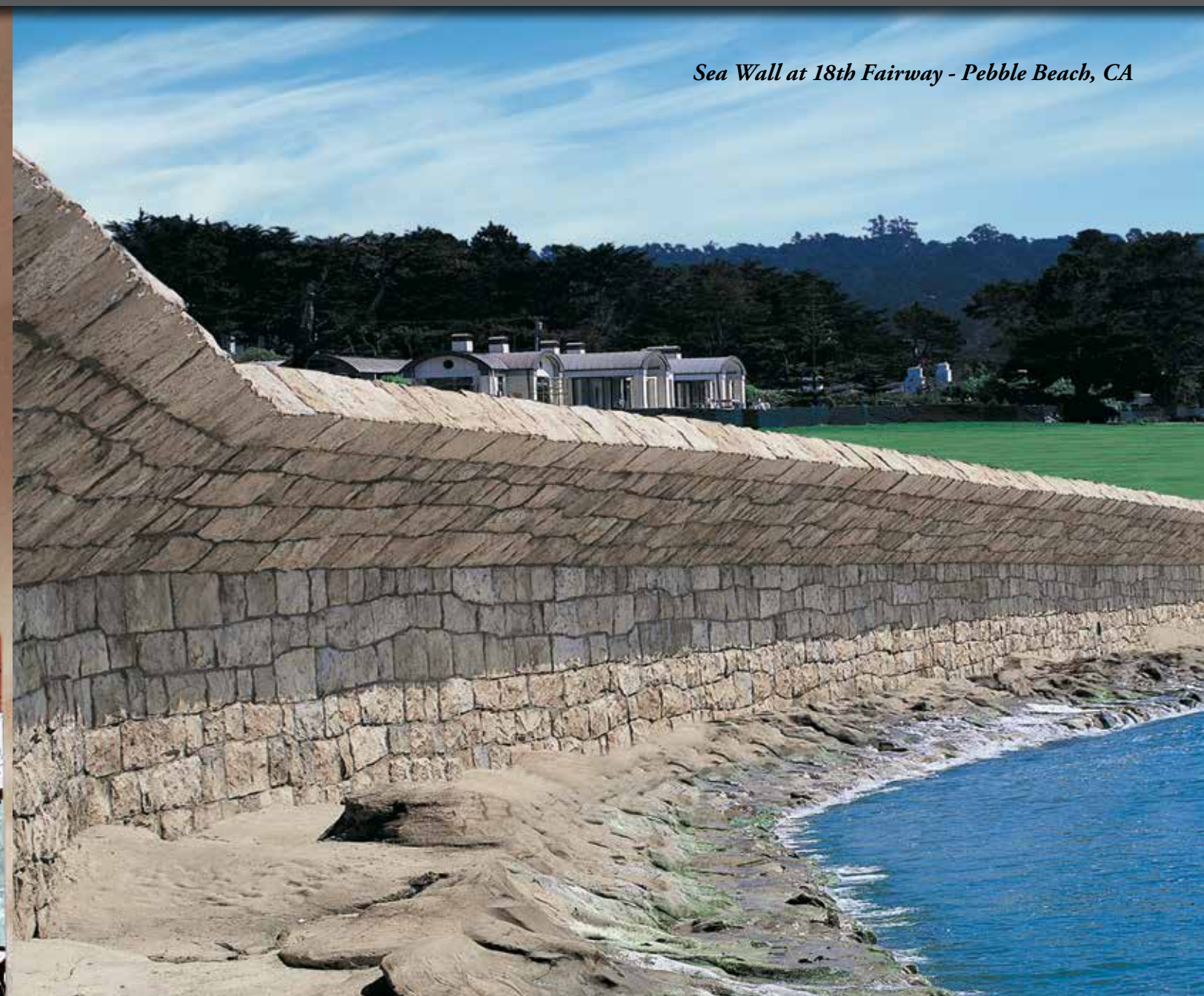
Carolina Rubble
Gold Blend



Carolina Rubble
Aspen



English Rubble - *Dakota Brown*



Sea Wall at 18th Fairway - Pebble Beach, CA

English Rubble - *Pebble Beach Blend*



English Rubble
Black Hills



English Rubble
Dakota Brown



English Rubble
Newport Sandstone



Santa Barbara - Sand Dune (Coursed Pattern)



Santa Barbara - Brookshire (Ashlar Pattern)



Santa Barbara
English Grey (Ashlar Pattern)



Santa Barbara
Sand Dune (Ashlar Pattern)



Santa Barbara
Brookshire (Ashlar Pattern)



Country Castle - Sahara Beige (Grouted)



Belgian Castle - Chablis (Dry Stacked)



Country Castle
Chalk (Grouted)



Country Castle
Sahara Beige (Grouted)



Country Castle
Antique Cream (Grouted)



Belgian Castle
Bear Creek (Dry Stacked)



Belgian Castle
Chablis (Grouted)



Belgian Castle
Brookside (Dry Stacked)



IRREGULAR SHAPED STONE SERIES

The irregular shaped stones shown in this series replicate a diverse group of fieldstones and river rocks that are native to the Eastern United States. These stones feature textures forged by millions of years of erosion, and a color palette of rich earthy hues that blend seamlessly with outdoor environments.

Appalachian Fieldstone - Mountain Sunset



Minnesota Fieldstone - *Dakota Brown*



Minnesota Fieldstone - *Coastal Brown*



Minnesota Fieldstone
Huron



Minnesota Fieldstone
Carmel Mountain



Minnesota Fieldstone
Dakota Brown



Minnesota Fieldstone
Chablis



Minnesota Fieldstone
Aspen



Minnesota Fieldstone
Coastal Brown



Appalachian Fieldstone - *Grey Quartzite*



Appalachian Fieldstone - *Mountain Sunset*



Appalachian Fieldstone
Grey Quartzite



Appalachian Fieldstone
Madison County



Appalachian Fieldstone
Mountain Sunset



Split Fieldstone - *Carmel Mountain*



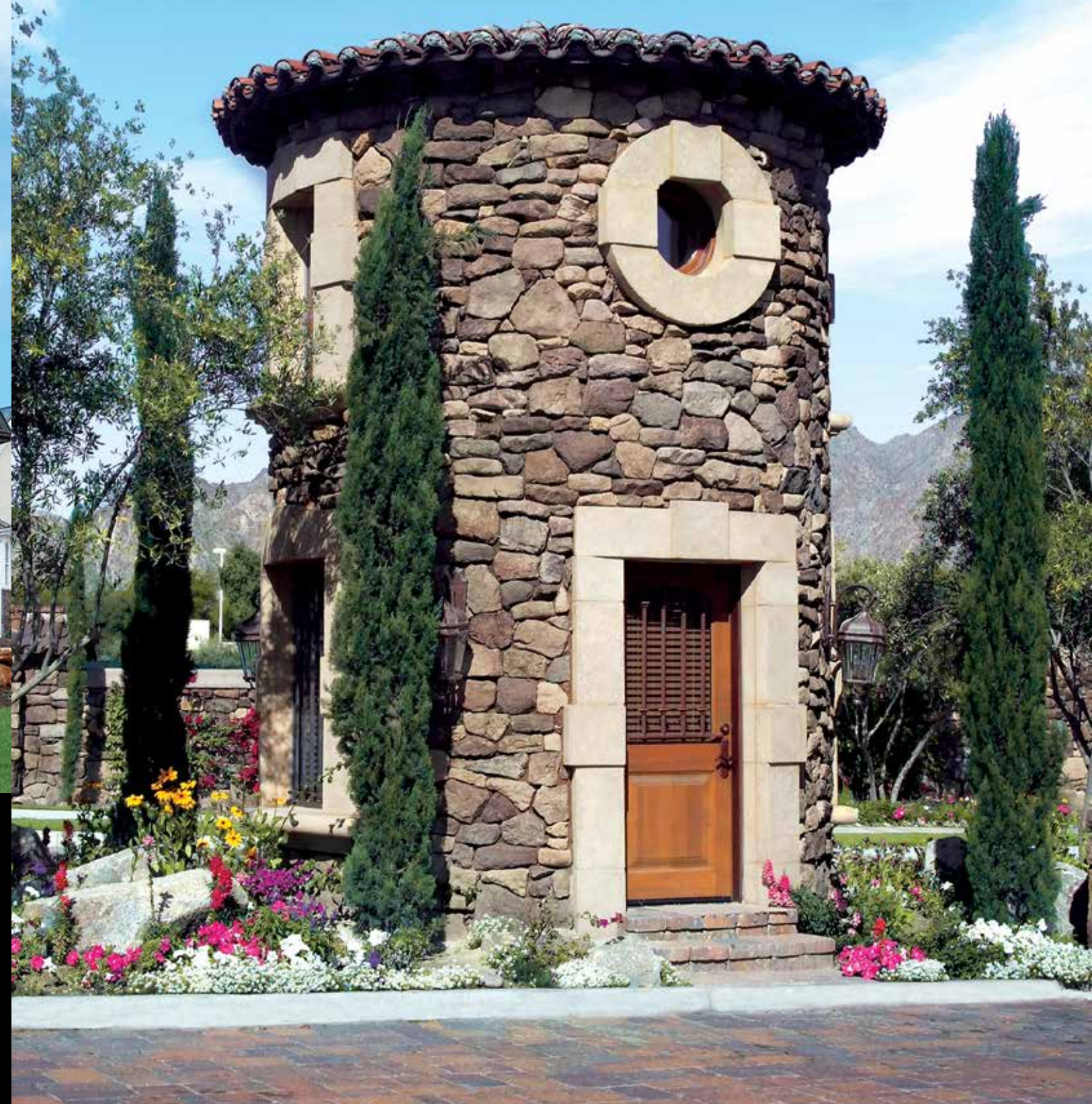
Split Fieldstone
Lompoc



Split Fieldstone
Carmel Mountain



Split Fieldstone
Dakota Brown



Viejo Ranch - *Viejo Blend*



River Rock - *Seaside*



Creek Rock - *Southwest Blend*



River Rock
Reno Blend



River Rock
Sienna Brown



River Rock
Desert Rust



Creek Rock
Apache Brown



Creek Rock
Calico Sand



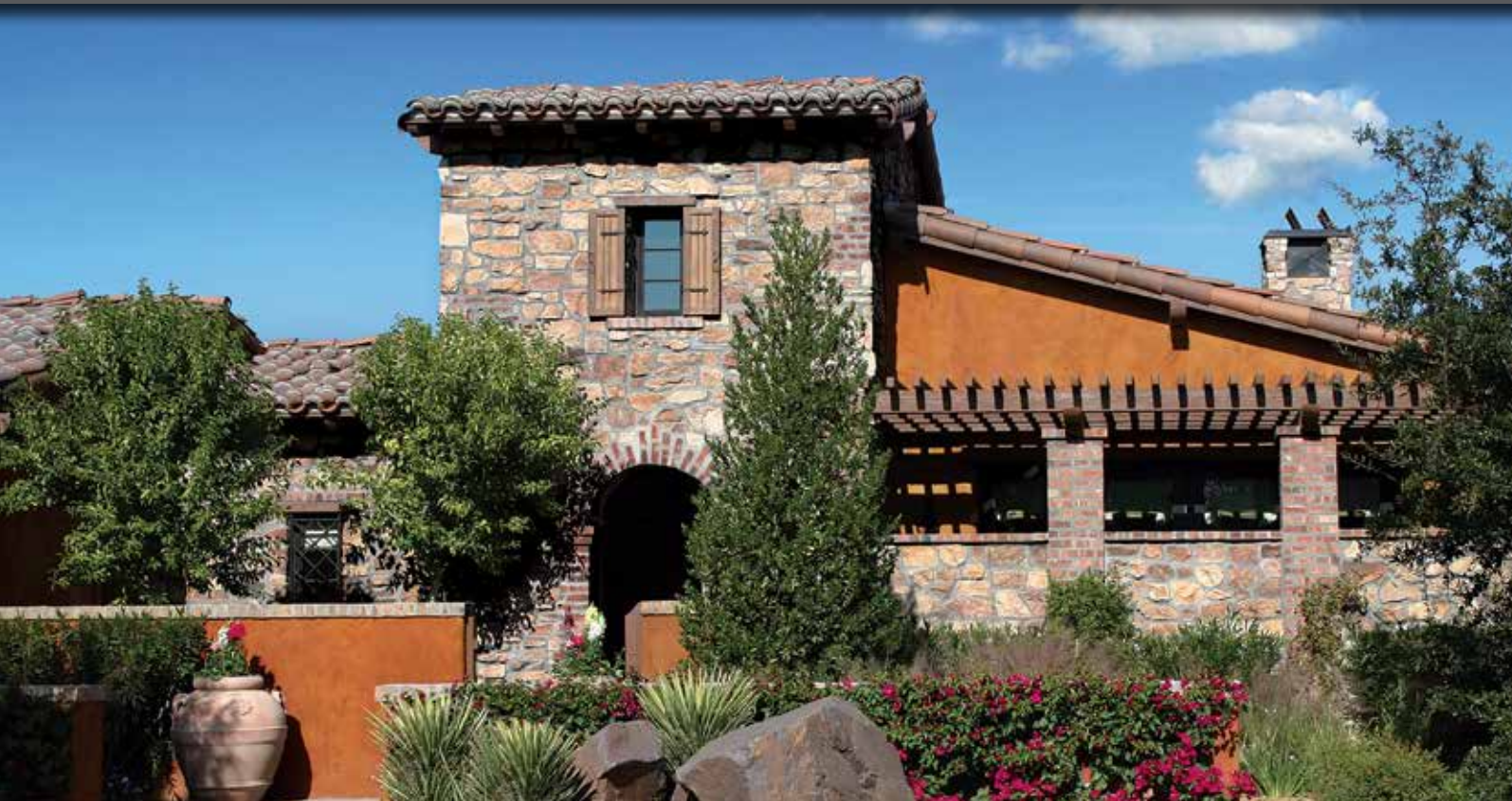
Creek Rock
Palm Springs Blend



STONE COMBINATIONS

Multiple stone veneer styles and colors can be combined to create a custom appearance. Varying the percentage of each profile allows designers to create drastically different looks, which enables further refinement of the style they are trying to achieve.

70% Eastern Mountain Ledge® - *Coastal Brown*
30% Minnesota Fieldstone - *Coastal Brown*



50% Italian Villa - *Verona*
50% Tuscan Villa - *Florentine*



70% Eastern Mountain Ledge - *Carmel Mountain*
30% Minnesota Fieldstone - *Carmel Mountain*



(Left Side) Refined WoodStone - *Blackened Oak*
(Right Side) 3" Split Limestone - *Cream*



70% Old World Ledge - *Grey Quartzite*
30% Appalachian Fieldstone - *Grey Quartzite*



THIN BRICK SERIES

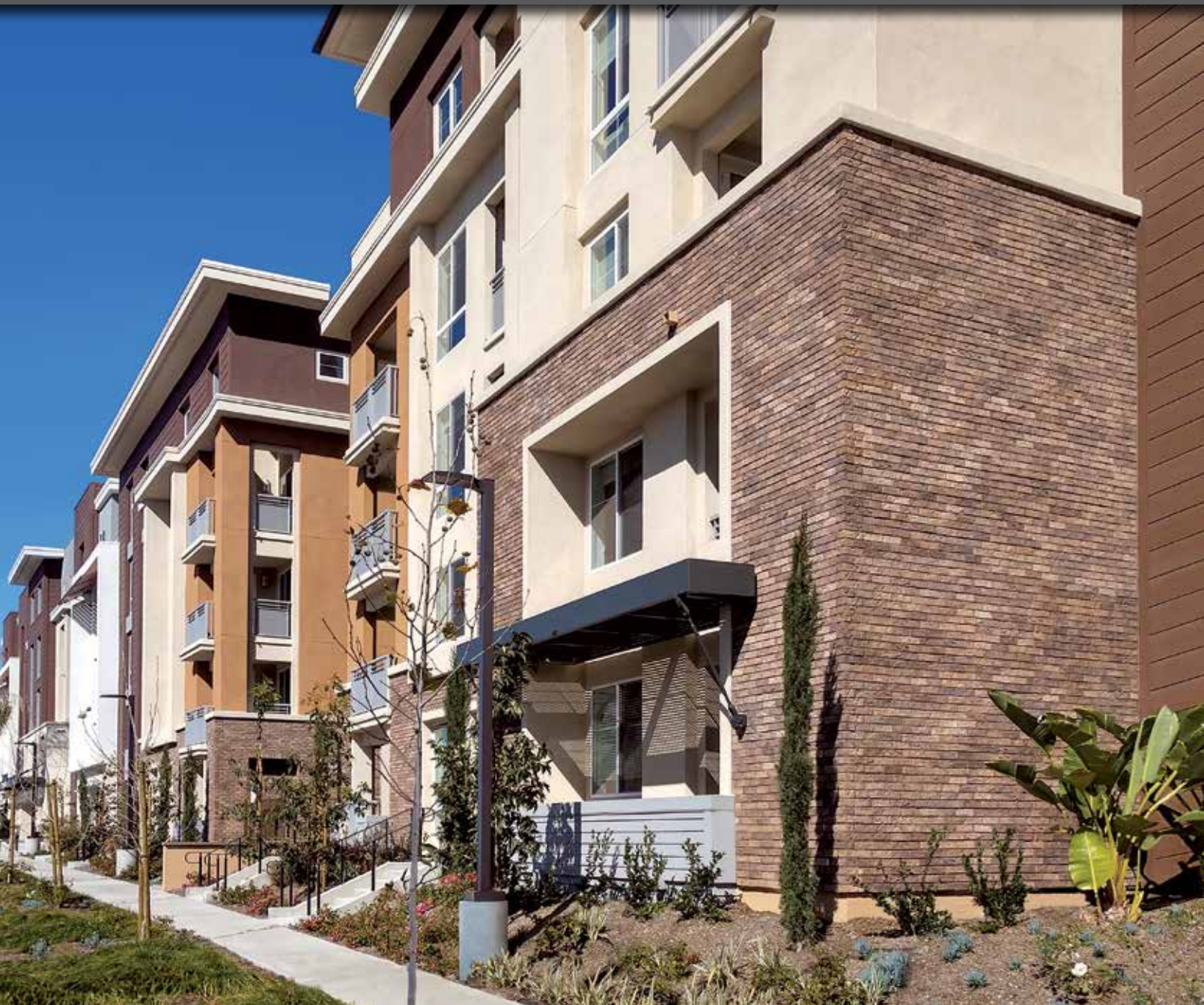
We offer a range of thin brick products that come in a wide variety of sizes, textures and colors. Projects can be enhanced with the alluring look and feel of full bed-depth brick without the need for additional wall tie support that standard brick installations require.

Adobe Brick - Sienna with Mortar Wash

NEW PRODUCT



2 3/4" x 8 3/4" Sand Mold Brick - *Savannah Grey*



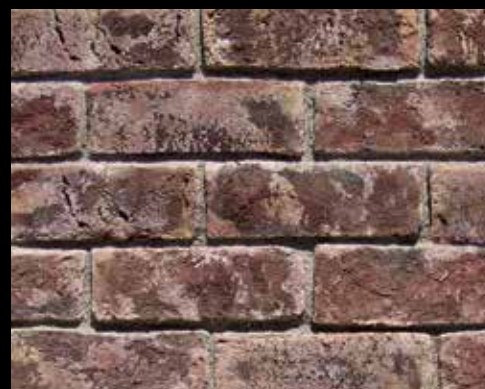
2 1/2" x 8" Belgian Brick - *Brookside*



2 3/4" x 8 3/4" Sand Mold Brick
Old Colonial



2 1/2" x 8 3/4" Sand Mold Brick
Savannah Grey



2 3/4" x 8 3/4" Sand Mold Brick
Barnacle



2 1/2" x 8" Belgian Brick
Bear Creek



2 1/2" x 8" Belgian Brick
Eagle Buff



2 1/2" x 8" Belgian Brick
Brookside



2½" x 8" Special Used Brick - *Eagle Buff*



2½" x 8" Special Used Brick - *Rustic Blend*



2½" x 8" Special Used Brick
Bear Creek



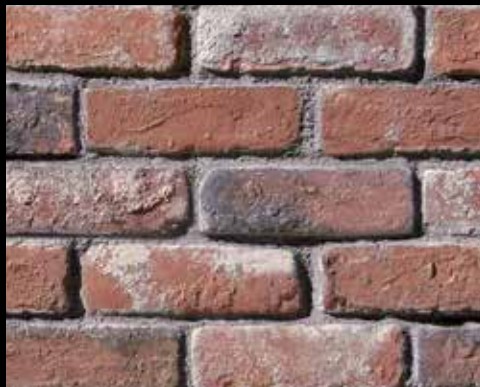
2½" x 8" Special Used Brick
Wolf Grey



2½" x 8" Special Used Brick
Eagle Buff



2½" x 8" Special Used Brick
White



2½" x 8" Special Used Brick
Rustic Blend

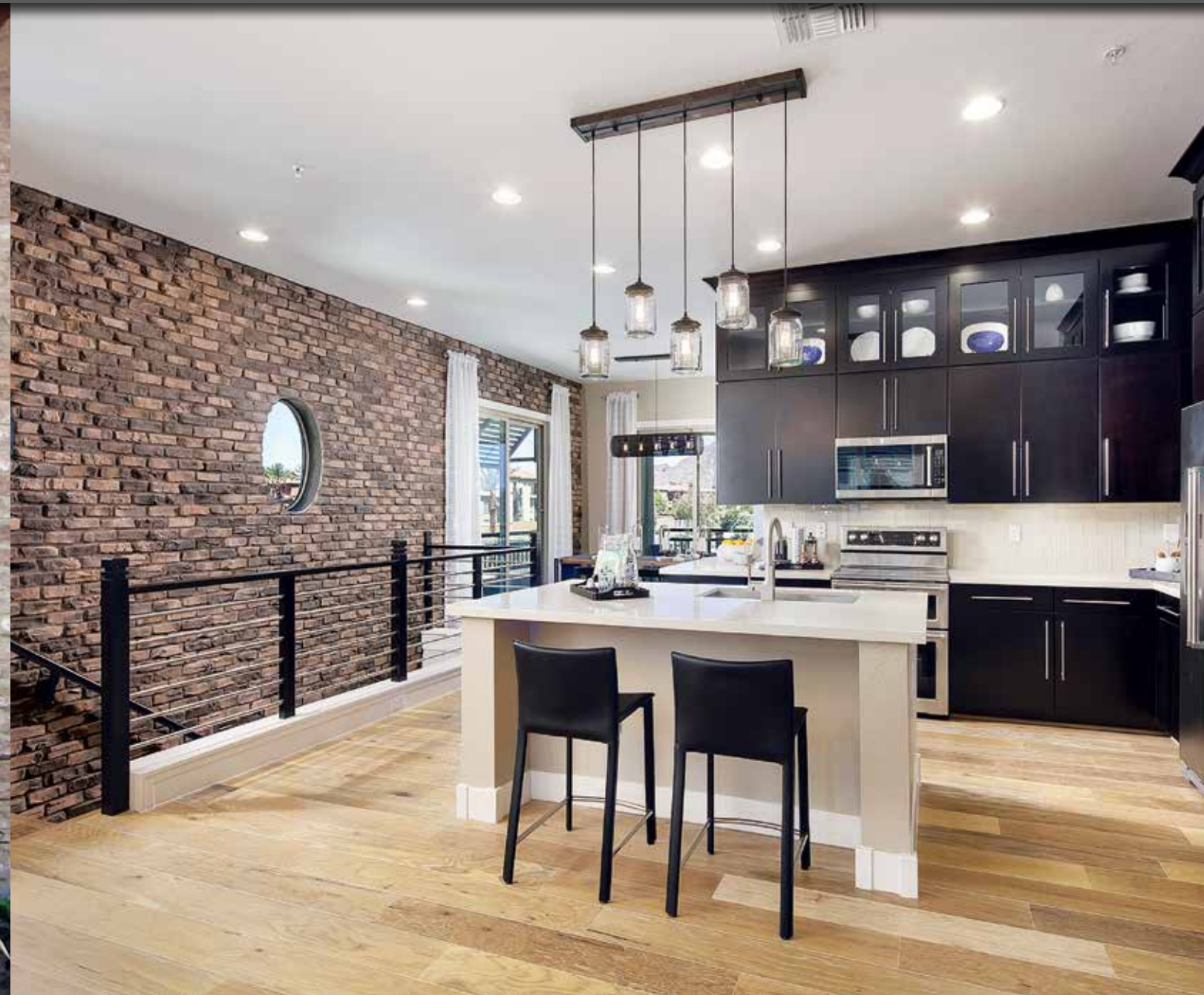


2½" x 8" Special Used Brick
Glacier

Square foot coverage is based on installation with a ½" mortar joint.
Other colors may be available with an upcharge. All sizes are nominal.



2½" x 8" Sculptured Brick - Eagle Buff



2½" x 8" Clinker Brick - Brown Blend



*2½" x 8" Sculptured Brick
Eagle Buff*



*2½" x 8" Sculptured Brick
Aspen*



*2½" x 8" Sculptured Brick
Wheat*



*2½" x 8" Clinker Brick
Eagle Buff*



*2½" x 8" Clinker Brick
Brown Blend*



*2½" x 8" Clinker Brick
Antique Red*



2 1/2" x 8" Wirecut Brick - *Wolf Grey*



2 1/2" x 8" Wirecut Brick - *La Jolla Blend*



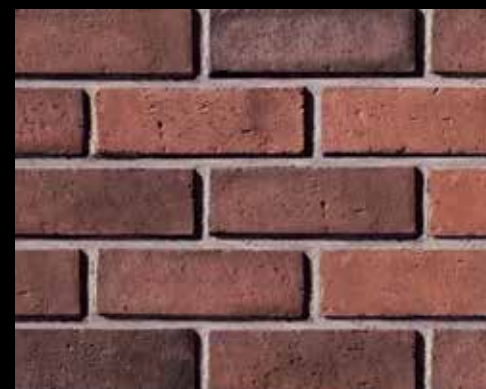
2 1/2" x 8" Wirecut Brick
Black Forest



2 1/2" x 8" Wirecut Brick
Wolf Grey



2 1/2" x 8" Wirecut Brick
Cottonwood



2 1/2" x 8" Wirecut Brick
La Jolla Blend



2 1/2" x 8" Wirecut Brick
Iceberg



2 1/2" x 8" Wirecut Brick
Glacier



2 1/2" x 8" Sicilian Brick - *Ferrara Blend*



2 1/4" x 10" Roman Brick - *Mezzano*



2 1/2" x 8" Sicilian Brick
Ferrara Blend



2 1/2" x 8" Sicilian Brick
Marsala Blend



2 1/2" x 8" Sicilian Brick
Monreale



2 1/4" x 10" Roman Brick
Mezzano



2 1/4" x 10" Roman Brick
Sorano



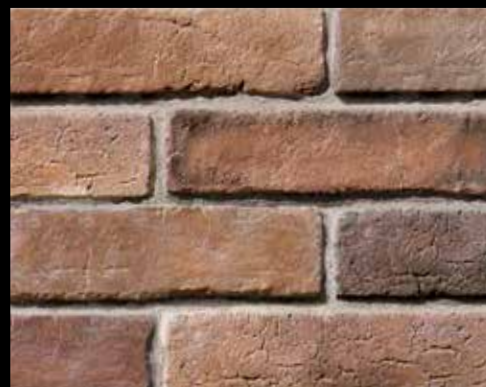
2 1/4" x 10" Roman Brick
Ambrosia



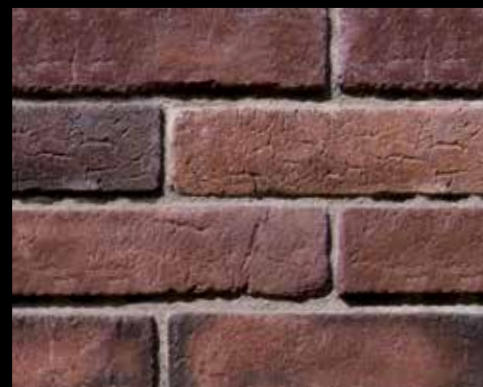
3" x 10" Weathered Brick - *Carmel Mountain*



3" x 10" New England Brick - *Charleston*



3" x 10" Weathered Brick
Carmel Mountain



3" x 10" Weathered Brick
Antique Red



3" x 10" Weathered Brick
San Vincenzo



3" x 10" New England Brick
Charleston



3" x 10" New England Brick
Dakota Brown



3" x 10" New England Brick
Bear Creek



4" x 16" Adobe Brick - *Haystack*



4" x 16" Adobe Brick - *Sienna with Mortar Wash*



4" x 16" Adobe Brick
Haystack



4" x 16" Adobe Brick
Saltillo



4" x 16" Adobe Brick
Sienna



TRIM & ACCESSORIES

Coronado Stone offers one of the largest architectural stone accessory product lines in the industry. These meticulously handcrafted accents will add the extra finishing touches to your amazing project.

Flagstone Wall Cap - *Lompoc*
Italian Villa® - *Dakota Brown*

SILLS



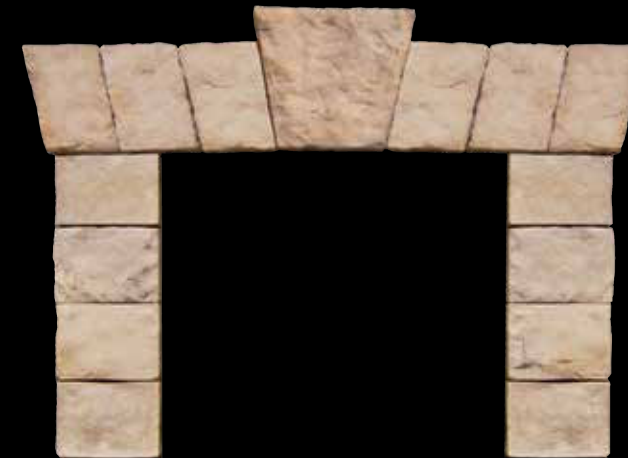
LINTELS



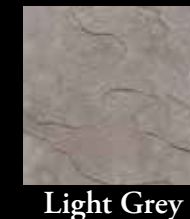
MANTELS



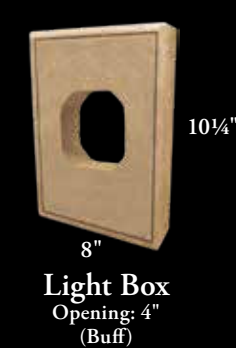
WINDOW STONES AND KEYSTONE



HEARTHSTONES



BOXES



WALL & POST CAPS



Flagstone Wall Cap - Brownstone



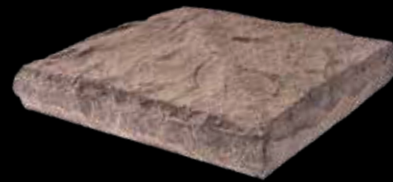
Chiseled Stone Post Cap - Lompoc



**Flagstone Post Cap
(Lompoc)**
20" x 20", 28" x 28", 30" x 30"
Edge Thickness: 3½"



**Flagstone Wall Cap
(Light Grey)**
9" x 18", 12" x 24", 14" x 24", 18" x 24"
Edge Thickness: 2½"



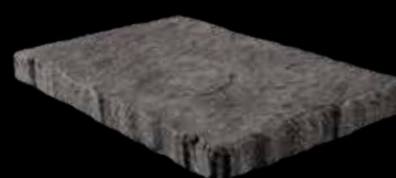
**Chiseled Stone Post Cap
(Brownstone)**
16" x 16", 18" x 18", 20" x 26", 21" x 21"
24" x 24", 28" x 28", 30" x 30", 32" x 32"
36" x 36", 38" x 38", 42" x 42"
Edge Thickness: 3½"
Peak Height: Varies Depending on Size



**Chiseled Stone Wall Cap
(Cream)**
8" x 24", 10" x 18", 12" x 18"
14" x 18", 16" x 24", 18" x 24"
Edge Thickness: 2"
Peak Height: 3½"



**Snapped Edge Post Cap
(Buff)**
24" x 24"
Edge Thickness: 1¾"



**Snapped Edge Wall Cap
(Charcoal)**
12" x 24", 14" x 24"
Edge Thickness: 1¾"

BRICK ACCESSORIES



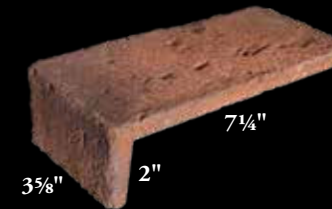
Brick Molding - Antique Red



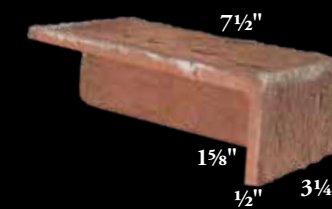
Brick Corner - Rustic Blend



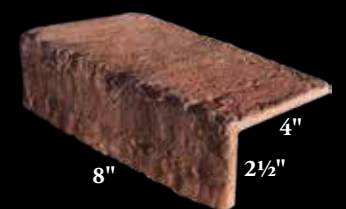
**2½" x 8" Corner
(Rustic Blend)**



**4" x 8" Corner
(Rustic Blend)**



**3-Sided Corner
(Rustic Blend)**
Left and Right Corners Available



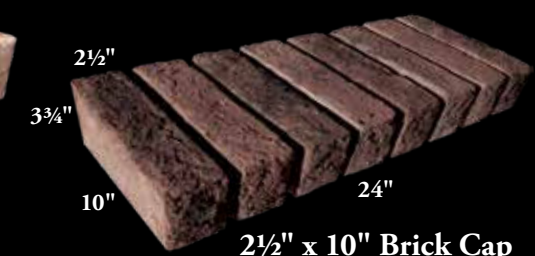
**Long Return Corner
(Rustic Blend)**



**Brick Sill
(Rustic Blend)**



**2½" Brick Molding
(Rustic Blend)**



**2½" x 10" Brick Cap
(Antique Red)**

Items do not come grouted.



3/4" Full Brushed (White Grout)
French Country Villa® - Bordeaux



3/4" Full Brushed (Matching Grout)
French Country Villa® - Bordeaux



1/2" - 3/4" Deep Raked
Mountain Villa® - Rustic Valley



Full Brushed - White Grout



Shallow Brushed - Grey Grout



3/4" Full Clean Smooth Brushed
Euro Villa® - Timberlake



1" Full Rough Brushed
Euro Villa® - Timberlake



3/4" Full Brushed
Tuscan Villa® - Prairie Moss



1" - 1 1/2" Full Smooth Tooled
Mountain Villa® - Rustic Valley



3/4" Shallow Brushed
Mountain Villa® - Grey Quartzite



1" - 1 1/2" Full Brushed
Mountain Villa® - Grey Quartzite



3/4" Deep Raked (Matching Grout)
Italian Villa® - Portabella



1" Full Brushed (White Grout)
Italian Villa® - Portabella



3/4" Weeping
Tuscan Villa® - Prairie Moss



TECHNICAL DATA

Coronado Stone supports the specification and design process with architectural binders, hatch patterns, tileable textures and a variety of other helpful specification tools, all of which are available in hardcopy or can be downloaded from our website.

Prairie Stone - Grey Granite

TECHNICAL DATA

Coronado Stone is manufactured to meet or exceed specifications for all major code approvals. Independent testing confirms compliance with ICC-ES AC51 for Precast Stone Veneer. Always check your local building codes before installing stone.

Weight: The average packaged weight of Coronado Stone veneer is 8 to 12 lbs. per square foot. Weight varies with thickness.

Non-combustible: Testing on Coronado Stone showed zero flame spread and zero smoke development.

Integral Colors: Coronado's production process results in a product which maintains a natural stone appearance even after many years of exposure to the elements.

Approvals: Coronado Stone has been tested by independent laboratories and has been approved for its intended use by:

ES ICC The International Conference of Building Officials. Report ESR-2598

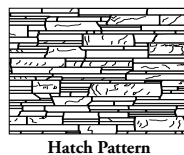
Texas Department of Insurance Product Approval Code. Evaluation ID EC-101

Florida Department of Business & Professional Regulation Approval Code. Evaluation FL31373

TECHNICAL DOWNLOADS

Visit www.CORONADO.com to download an extensive collection of technical data and specification sheets. Click on the **(RESOURCES)** link in the top menu bar to view the following items:

- Installation Specification Sheets
- Technical Data
- Cross-Section Details
- Hatch Patterns
- Stone Tileable Textures



TESTING

Materials:

- Cement ASTM C150
- Sand ASTM C144 or C33
- Aggregate ASTM C33 or C330

Testing:

- Shear Bond Test Tested in accordance with ASTM C482 Greater than 50 psi
- Water Absorption Tested in accordance with section 3.1.4 & 4.6 of ICC-ES AC51
- Freeze / Thaw Tested in accordance with ASTM C67 Less than 3% mass loss
- Unit Weight Shipping weight is less than 15 lbs. per sq. ft. Density is determined in accordance with ASTM C567
- Compressive Strength Tested in accordance with ASTM C39 Greater than 1800 psi
- Tensile Strength Tested in accordance with ASTM C190
- Flexural Strength Tested in accordance with ASTM C348

INSTALLATION GUIDES

- Standard Stone Installation Guide (Available in English and Spanish)
 - WoodStone Installation Guide
 - Classic Series Installation Guide (Available in English and Spanish)
 - Industrial Ledge Installation Guide
 - The Wave Installation Guide
 - Lennox Stone Installation Guide
 - Coronado Stone Additional Tech Notes
- www.CORONADO.com/InstallationGuides

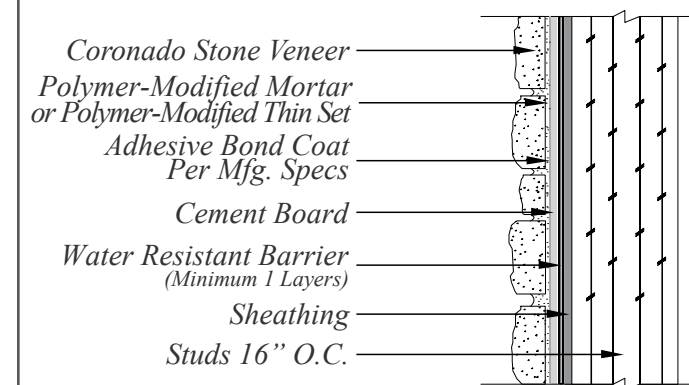
⚠ PROP 65 WARNING

Our cement stone veneer products contain Silica, crystalline (airborne particles of respirable size), which is known to the State of California to cause cancer.

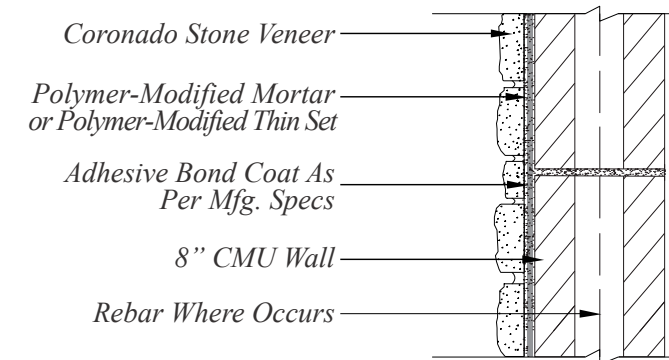
A properly fitted NIOSH approved particulate filtering facepiece should be used during dust generating processes, including cutting, sawing, and/or drilling.

For more information go to www.P65Warnings.ca.gov.

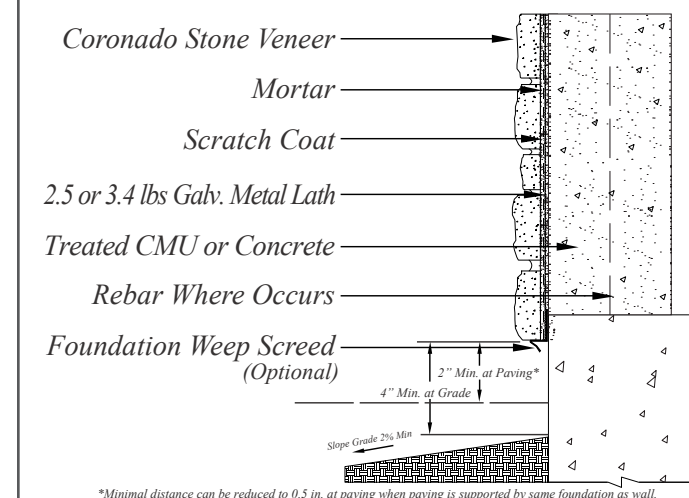
WOOD FRAME WITH CEMENT BOARD



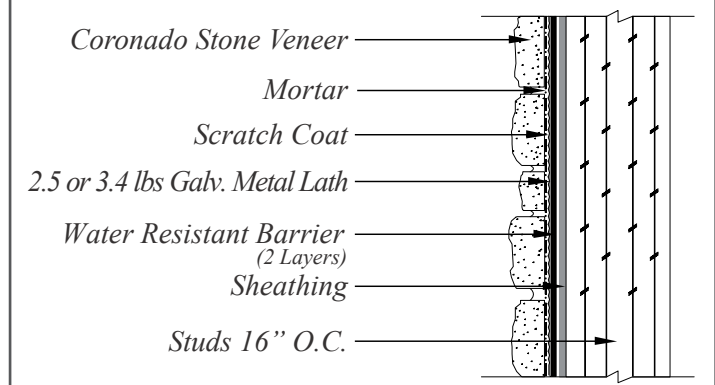
UNTREATED / UNPAINTED CLEAN CMU



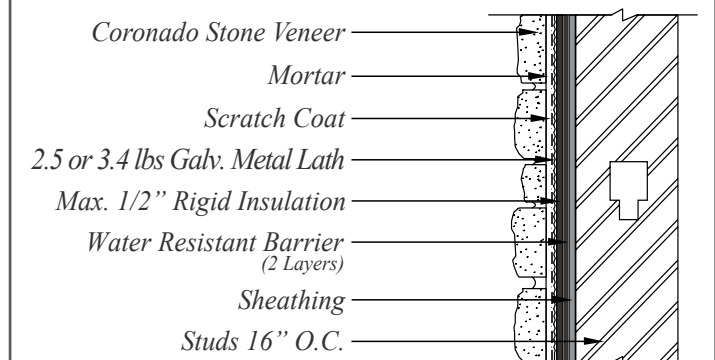
TREATED / PAINTED CONCRETE



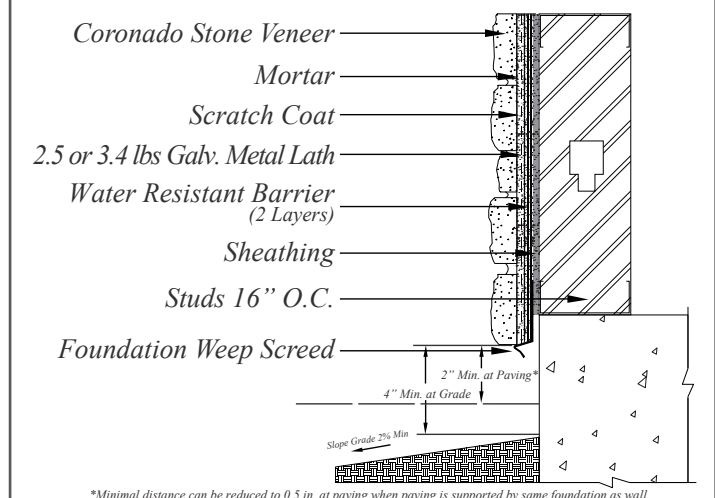
WOOD FRAME WITH SHEATHING



STEEL FRAME WITH RIGID INSULATION



STEEL FRAME WITH SHEATHING



For Additional Details Please Visit - <https://www.coronado.com/TechnicalDrawings>
Drawings Not To Scale

CORONADO STONE SIZES

<i>Profile</i>	<i>Height</i>	<i>Length</i>	<i>Thickness</i>	<i>Weight</i>
3" Split Limestone	3"	up to 18"	1" - 1¾"	7 - 10 lbs.
6" Split Limestone	6"	up to 30"	¾" - 1¼"	7 - 10 lbs.
8" Classic Jerusalem	8"	8" - 24"	1"	7 - 10 lbs.
Adobe Brick	3½" (±½")	15¼" (±¼")	1"	4 - 6 lbs.
Aegean Coral	16"	24"	1"	7 - 10 lbs.
Amalfi Ledge	2" and 6"*	24"	1" - 1½"	7 - 10 lbs.
Appalachian Fieldstone	7" - 9"	7" - 9"	1½" - 2½"	7 - 10 lbs.
Artisan Ledge	4"*	up to 20"	1" - 1½"	7 - 10 lbs.
Barn WoodStone	4", 6" and 8"	36"	1"	7 - 10 lbs.
Belgian Brick	2½" (±1/16")	7¾" (±1/8")	⅝" (±1/16")	4 - 6 lbs.
Belgian Castle	2" - 12"	up to 16"	1"	7 - 10 lbs.
Canyon Cobble	2" - 10"	4" - 24"	1" - 1¾"	7 - 10 lbs.
Canyon Ledge	1" - 7"	up to 20"	1½" - 3"	7 - 10 lbs.
Caribbean Coral	4" - 12"	4" - 16"	1"	7 - 10 lbs.
Carolina Rubble	2" - 10"	4" - 16"	1¼" - 2¼"	7 - 10 lbs.
Chiseled Limestone	12"	24"	1"	7 - 10 lbs.
Clinker Brick	2 ½" Average	4" or 8"	⅝" - 2"	4 - 6 lbs.
Colosseum Travertine	16"	24"	1"	7 - 10 lbs.
Coronado Honey Ledge	2" and 4"*	up to 20"	1" - 2"	7 - 10 lbs.
Coronado Strip Stone	1½" - 2"	up to 23"	1¼" to 2"	7 - 10 lbs.
Country Castle	1½" - 7½"	4" - 20"	1½"	7 - 10 lbs.
Country Rubble	2" - 8"	up to 23"	1" - 2½"	7 - 10 lbs.
Creek Rock	3" - 10"	3" - 10"	¾" - 2½"	7 - 10 lbs.
Eastern Mountain Ledge®	1" - 5"*	up to 22"	1" - 3"	7 - 10 lbs.
Element LedgeStone	2" and 4"*	up to 20"	¾" - 2"	7 - 10 lbs.
English Rubble	6" - 14"	8" - 32"	1¼" - 2"	9 - 12 lbs.
French Country Villa®	2" - 7"	up to 18"	1½" - 2"	7 - 10 lbs.
French Limestone	12"	24"	1"	7 - 10 lbs.
The Getty Stone	16"	24"	1" - 1¾"	9 - 12 lbs.
Hill Country Limestone	12"	24"	1"	7 - 10 lbs.
Idaho Drystack	1" - 4"	4" - 16"	1¼" - 2"	7 - 10 lbs.
Industrial Ledge	2", 3", 4", 5" & 7"	4" - 30"	¾" - 2"	7 - 10 lbs.
Italian Villa®	2" - 8"	up to 16"	1½" - 2¾"	7 - 10 lbs.
Minnesota Fieldstone	6" - 12"	6" - 12"	1½" - 2½"	7 - 10 lbs.
Montana Ledge	1" - 4"*	up to 20"	1" - 2½"	7 - 10 lbs.
Mountain Strip Stone	1½" and 3"	up to 23"	1¼" to 2"	7 - 10 lbs.
New England Brick	2⅝" (±1/16")	9½" (±1/8")	⅝" (±1/16")	4 - 6 lbs.

<i>Profile</i>	<i>Height</i>	<i>Length</i>	<i>Thickness</i>	<i>Weight</i>
Old Country Ledge	2" - 7"	4" - 20"	1" - 1¾"	7 - 10 lbs.
Old World Ledge	1" - 5"	4" - 16"	1" - 1½"	7 - 10 lbs.
Osage	3" - 12"	4" - 28"	1" - 1½"	7 - 10 lbs.
Pavilion Stone	4" - 12"	4" - 20"	½" - 1"	7 - 10 lbs.
Playa Vista Limestone	2½", 5" and 7¾"	up to 24"	1" - 1½"	7 - 10 lbs.
Prairie Stone	1¾" and 3⅝"	up to 24"	1⅞"	7 - 10 lbs.
Pro-Ledge®	4"*	up to 20"	1" - 1½"	7 - 10 lbs.
Quick Stack®	2" or 4"*	up to 20"	1" - 2"	7 - 10 lbs.
Refined WoodStone	6"	36"	1"	7 - 10 lbs.
River Rock	2" - 10"	2" - 10"	¾" - 2½"	7 - 10 lbs.
Rocky Mountain Ledge	1" - 7"	up to 24"	1" - 2½"	7 - 10 lbs.
Roman Brick	2¼" (±1/8")	10" (±1/8")	⅝" (±1/16")	4 - 6 lbs.
Rough Cut WoodStone	6"	36"	1"	7 - 10 lbs.
Sand Canyon Flagstone	16"	30"	1"	9 - 12 lbs.
Sand Mold Brick	2¾" (±1/8")	8¾" (±¼")	⅝" (±1/16")	4 - 6 lbs.
Santa Barbara	4" - 14"	8" - 32"	1¼" - 2"	9 - 12 lbs.
Sawtooth Ledge	3" and 6"	up to 20"	1"	7 - 10 lbs.
Sculptured Brick	2½" (±1/8")	7⅝" (±¼")	⅝" - 1"	4 - 6 lbs.
Sicilian Brick	2½" (±1/8")	7¾" (±1/8")	⅝" (±1/16")	4 - 6 lbs.
Sierra Ledge	4"*	up to 20"	1½" - 2"	7 - 10 lbs.
Smooth Limestone	12"	24"	1"	7 - 10 lbs.
Sonora Sandstone	12"	28"	1"	7 - 10 lbs.
Special Used Brick	2½" (±1/8")	7¾" (±¼")	⅝" (±1/16")	4 - 6 lbs.
Split Fieldstone	6" - 20"	6" - 20"	1" - 2"	7 - 10 lbs.
Texas Rubble	2" - 8"	up to 23"	1" - 2½"	7 - 10 lbs.
Tuscan Villa®	2" - 12"	4" - 16"	1" - 1¾"	7 - 10 lbs.
Urbana Smooth	7½"	15½"	1"	7 - 10 lbs.
Urbana Split	8"	16"	1"	7 - 10 lbs.
Venetian Villa®	2" - 14"	4" - 32"	1" - 2½"	7 - 10 lbs.
Viejo Ranch	2" - 18"	up to 30"	2" - 3"	9 - 12 lbs.
Virginia Ledge	2" or 4"*	up to 20"	1" - 3"	7 - 10 lbs.
Weathered Brick	2⅝" (±1/8")	9⅞" (±1/8")	⅝" (±1/16")	4 - 6 lbs.
Weathered Edge	1" - 7"	up to 32"	1" - 2½"	7 - 10 lbs.
Wirecut Brick (Oversized)	3⅝" (±1/16")	11 ½" (±1/8")	⅝" (±1/16")	4 - 6 lbs.
Wirecut Brick (Standard)	2⅝" (±1/16")	7⅞" (±1/8")	⅝" (±1/16")	4 - 6 lbs.

All sizes and weights are nominal and may vary slightly depending on profile.
Weight is based on one square foot of stone.
Contact Coronado for further details.
* Stone sizes within panels may vary.

STONE COLOR INDEX & PROJECT IMAGE CREDITS

<i>Color</i>	<i>View Color On Page</i>
Alaskan Sunset	25, 50
Antique Cream	56, 62, 74, 75, 81
Aspen	56, 68, 74, 76, 86, 103
Bear Creek	82, 100, 101, 110
Blackened Oak	21, 22, 30, 95
Black Forest	12, 14, 27, 48, 49, 50, 105
Bordeaux	35-36, 44,119
Brookside	47, 50, 58, 62, 66, 82, 100
Cape Cod Grey	34, 47, 55, 56, 57, 64, 66, 67, 75
Carmel Mountain	51, 56, 60, 64, 68, 85, 89, 96, 109
Cathedral Grey	54, 55, 56, 58
Chablis	40, 43, 47, 51, 59, 61, 82, 86
Chalk	11, 37, 81
Champagne	40, 44
Coal Canyon	69, 70
Coastal Brown	37, 56, 60, 64, 74, 86, 93-94
Country Beige	1, 3, 9, 16
Cream	8, 10, 11, 13, 15, 16, 23-24, 25, 27, 28, 95, 116, 117
Dakota Brown	40, 41, 59, 66, 74, 77, 78, 85, 89, 110, 113-114
Etowah	61, 64
Falmouth	54, 58
Florentine	41, 95, 127
Foxhill Blend	69, 70
French White	1, 2, 3, 9
Grey	27, 38
Greycliffe	63, 65
Grey Granite	2, 29, 121-122
Grey Quartzzite	44, 52, 60, 62, 67, 73, 74, 87, 88, 96, 119, Back Cover
Huron	50, 52, 54, 60, 61, 63, 85
Lompoc	89, 113-114, 115, 116, 117
Madison County	38, 59, 88
Monarch	62, 64
Mountain Sunset	83-84, 88
Mount Vernon	4, 53
Northland	4, 53
Oakbrook	30, 50
Palazzo	33, 38
Pine Creek	31-32
Prairie Moss	42, 120
Provo Canyon Grey	39, 40, 60
Roman	Cover, 12, 115
Sahara Beige	7, 81
Sand Dune	79, 80
Sandstone	71-72, 76
Silver Ash	1, 4, 5-6, 7, 9, 10, 14, 16, 53
Smoke	2, 29
Smokey Grey	45-46, 68
Texas Cream	74, 75
Verona	40, 43, 95
Vista Pointe	27, 53, 59, 62
Volterra	39, 40, 43
Walnut	25, 27
White	4, 27, 28, 48, 49, 50, 102, 116

Toll Brothers www.tollbrothers.com	Builder CA, AZ, NV	Cover, 8, 21, 23-24, 37, 42, 47, 49t, 54, 55t, 57, 76, 102, 105b, 106, 108, 110, 112, 127
LandCreativeInc. www.landcreativeinc.com	Landscape Architect Costa Mesa, CA	Cover
Arthur Rutenberg Homes www.arthurrutenberghomes.com	Builder Clearwater, FL	Back Cover, 35-36, 39, 73
Rob Harris Productions, Inc. www.rob-harris.com	Photographer Tampa, FL	Back Cover, 35-36, 39, 73
Studio V www.studiovinteriors.com	Interior Architect Scottsdale, AZ	3
Infinity Home Collection www.infinityhomecollection.com	Builder Denver, CO	5-6, 9, 85
Zephyr www.xephyrpartners.com	Builder Encinitas, CA	12
William Lyon Homes www.lyonhomes.com	Builder Newport Beach, CA	13, 34
Vance Fox Photography www.vancefox.com	Photographer Reno, NV	13, 34
Applied Photography LLC www.apgs.net	Photographer Orange, CA	17-18, 26
Lennar www.lennar.com	Builder Miami, FL	17-18, 20, 22, 27, 29, 30
KB Home www.kbhome.com	Builder Los Angeles, CA	25
SDK Atelier www.sdkatelier.com	Architect Irvine, CA	27, 30
Eric Figge Photography www.ericfiggephoto.com	Photographer Orange, CA	27, 30
Wendy Black Rodgers Interior www.wbrint.com	Interior Designer Scottsdale, AZ	39b
Castone www.castone.org	Distributor Knoxville, TN	38
Timber Ridge Properties www.timberridgeproperties.net	Builder Denver, CO	40, 69t, 74, 77
Weber Design Group www.weberdesigngroup.com	Builder Naples, FL	41
Tom Harper www.tomharperphotography.com	Photographer Naples, FL	41
Partners In Building www.partnersinbuilding.com	Builder Houston, TX	49b
Sustain Scape www.sustainscapeaz.com	Landscape Designer Scottsdale, AZ	60
Process Design Build, L.L.C. www.processdesignbuild.com	Builder Tucson, AZ	66
Van Metre Homes www.vanmetrehomes.com	Builder Ashburn, VA	67
Veranda Estate Homes www.verandaestatehomes.com	Builder Calgary, AB	71-72
Shea Homes www.sheahomes.com	Builder Gilbert, AZ	82, 109
Aron Photography www.aronphoto.com	Photographer Encinitas, CA	85
Frontier Homes www.fhcommunities.com	Builder Moreno Valley, CA	86
EON Design Group www.eondesignco.com	Designer Los Angeles, CA	93-94
CalAtlantic Homes www.calatlantichomes.com	Builder Las Vegas, NV	97-98
Camelot Homes www.camelothomes.com	Builder Scottsdale, AZ	101
Meritage Homes www.meritagehomes.com	Builder Phoenix, AZ	104
Arizona Stone www.arizonastone.com	Distributor Phoenix, AZ	105t
Mark Boisclair Photography, Inc. www.markboisclair.com	Photographer Phoenix, AZ	111
Maracay Homes www.maracayhomes.com	Builder Scottsdale, AZ	111

50 YEAR LIMITED WARRANTY

Coronado Stone Products® wall veneers are protected under this warranty for a period of 50 years from the date purchased, when used on a vertical structure which conforms to local building codes and when installed in accordance with the manufacturer's instructions. Warranty coverage specifically excludes: damage resulting from structure settlement and other types of wall movement, contact with paint or chemicals, discoloration due to contaminants, staining, oxidation and water damage.

This warranty covers only manufacturing defects in Coronado Stone Products® wall veneers and is limited to the replacement or repair of defective materials only and does not cover the cost of removal or installation of defective products. This warranty is limited to the original purchaser and is non-transferable to any subsequent owner.



Tuscan Villa® - Florentine

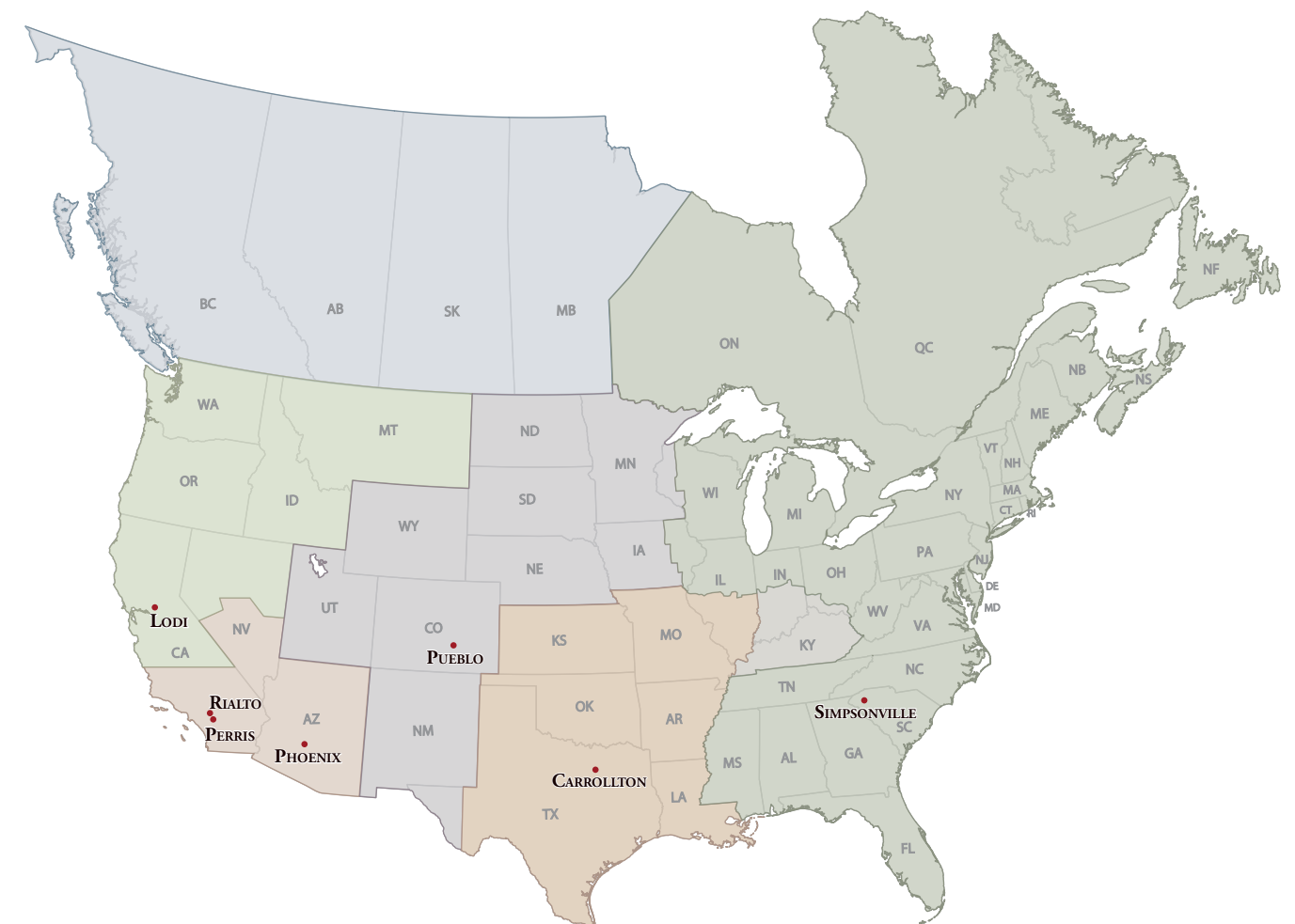
In 1960, there was only one stone manufactured in California. It was a 2½' x 4' sheet of concrete which was broken up into random shapes at the job site. Mel Bacon saw the need for something better and started making his own stone. He soon developed the first random shaped stones from individual molds which led to the development of many of today's popular varieties of ledge stones and ashlar patterns.

As a mason, Mel experienced the difficulty of installing stone that was not created with the installer in mind. It was heavy and the shapes and sizes were difficult to piece together. He realized that through proper pattern and mold design, ease of installation could be achieved. From that moment, ease of installation became the benchmark for every pattern of stone Mel created. Easy installation is not only a time saver, it's a project saver.

The pride we take in the creation of our product shows in the quality experience you will enjoy as one of our valued customers. Give Coronado the opportunity to make you a believer. Our mission is your satisfaction!

OVER 65 YEARS OF MANUFACTURING EXCELLENCE

Coronado manufactures and distributes its high quality stone at seven factories conveniently located across North America



Northwest Region serviced by the
Lodi, CA Manufacturing Facility
(209) 334-1380

Southwest Region serviced by the
Perris, CA Manufacturing Facility
(800) 847-8663

Mountain Region serviced by the
Pueblo, CO Manufacturing Facility
(719) 470-7381

Desert Region serviced by the
Phoenix, AZ Manufacturing Facility
(602) 732-6558

Central Region serviced by the
Carrollton, TX Manufacturing Facility
(972) 434-2515

Southeast Region serviced by the
Simpsonville, SC Manufacturing Facility
(864) 962-1221



Old World Ledge - Grey Quartzite

Five Dollars



CORONADO[®]
STONE PRODUCTS

342 Perry Street • Perris, CA 92571
Phone: (800) 847-8663 • Fax: (909) 357-7362
sales@coronado.com
WWW.CORONADO.COM

Due to photographic and printing variations, brochure colors may not be accurate. All sizes are nominal.
We suggest examination of Coronado product samples prior to purchase.